

WAYSIDE AMENITY

SOUTH ZONE

PROJECT INFORMATION MEMORANDUM



सत्यमेव जयते

सड़क परिवहन और राजमार्ग मंत्रालय
MINISTRY OF ROAD TRANSPORT & HIGHWAYS
भारत सरकार Government of India



भारतीय राष्ट्रीय राजमार्ग प्राधिकरण
National Highways Authority of India

WAY SIDE AMENITY DEVELOPMENT OPPORTUNITY ACROSS INDIA

South Zone Sites



Sites: RFP in progress



Click to download **Category 1 Sites RFP: Small 1**



Click to download **Category 2 Sites RFP: Large 1**



Click to download **Category 1 Sites RFP: Small 2**



Click to download **Category 2 Sites RFP: Large 2**

	Site Description (Click to go to PIM)	State	Area (Ha)	GPS (Lat)	GPS (Long)	Location Map (Link to external URL)
1	Madurai to Tuticorin/NH38/142+400/RHS/Tuticorin/ Tamil Nadu	Tamil Nadu	2.05	9.7924	78.093	click for location map
2	Hyderabad to Bangalore/NH7/502+640/RHS/Bangalore/Karnataka	Karnataka	3.19	13.472383	77.744276	click for location map
3	Hyderabad to Bangalore/NH44/250+500/LHS/Anantapur/Andhra Pradesh	Andhra Pradesh	2.26	15.486433	77.90231	click for location map
4	Bangalore to Anantpur/NH44/447+448/RHS/Anantapur/Andhra Pradesh	Andhra Pradesh	2	13.919	77.691	click for location map
5	Kolkata to Chennai/1NH16/1023+080/RHS/Vijayawada/Andhra Pradesh	Andhra Pradesh	6.97	16.781144	81.223624	click for location map
6	Dobbaspeta to Sarjapura/NH207/74+900/LHS/Bangalore/Karnataka	Karnataka	5.24	13.2171	77.7531	click for location map
7	Madurai to Madurai/NH44/186+500/LHS/Madurai/TamilNadu	Tamil Nadu	2.14	8.5204	77.658	click for location map
8	Chennai to Vellore/NH48/50+800/LHS/Kancheepuram/Tamil Nadu	Tamil Nadu	3.15	12.9219	79.8744	click for location map
9	Hosur to Krishnagiri/NH44/47+100/LHS/Krishnagiri/TamilNadu	Tamil Nadu	1.52	12.7121	77.888	click for location map
10	Tindivanam to Ulundurpet/NH45/150+600/LHS/Villupuram/ Tamil Nadu	Tamil Nadu	0.68	12.021	79.536	click for location map
11	Madurai to Madurai/NH44/74+200/RHS/Madurai/TamilNadu	Tamil Nadu	0.99	9.402	77.916	click for location map
12	Hyderabad to Machilipatnam/NH65/258+000/LHS/Vijayawada/Andhra Pradesh	Andhra Pradesh	1.97	16.59	80.517	click for location map
13	Vadakkancheri to Thrissur/ NH544/ 242+750/ RHS/ Palakkad/ Kerala	Kerala	1.01	10.58187	76.426281	click for location map
14	Vadakkancheri to Thrissur/ NH544/ 249+850/ LHS/ Palakkad/ Kerala	Kerala	1.14	10.56366	76.366909	click for location map
15	Krishnagiri to Hosur/NH44/77+800/RHS/Chennai/TamilNadu	Tamil Nadu	1.54	12.599	78.133	click for location map
16	Tindivanam to Ulundurpet/ NH45/ 133+600/ LHS/ Villupuram/ Tamil Nadu	Tamil Nadu	2.43	12.144521	79.60007	click for location map
17	Madurai to Madurai/NH44/186+500/RHS/Madurai/Tamil Nadu	Tamil Nadu	2.20	8.5201044	77.6562191	click for location map
18	Bangalore to Belgaum/NH4/457+648/LHS/Dharwad/Karnataka	Karnataka	3.87	15.587195	74.784979	click for location map
19	Walayar to Vadakkancheri/ NH544/ 186+500/ LHS/ Palakkad/ Kerala	Kerala	2.44	10.825742	76.817697	click for location map
20	Tindivanam to Ulundurpet/ NH45/ 186+400/ LHS/ Villupuram/ Tamil Nadu	Tamil Nadu	1.38	11.771473	79.389085	click for location map
21	Tindivanam to Ulundurpet/ NH45/ 186+400/ RHS/ Villupuram/ Tamil Nadu	Tamil Nadu	1.66	11.772111	79.388397	click for location map
22	Yadgiri to Warangal/NH163/101+500/RHS/Warangal/Telangana	Telangana	0.3	17.777969	79.285294	click for location map
23	Vadakkanchery to Thrissur/NH544/218+800/LHS/Palakkad/Kerala	Kerala	0.45	10.695768	76.588367	click for location map
24	Vadakkanchery to Thrissur/NH544/231+100/LHS/Palakkad/Kerala	Kerala	0.45	10.628862	76.513527	click for location map

WAY SIDE AMENITY
DEVELOPMENT OPPORTUNITY ACROSS INDIA

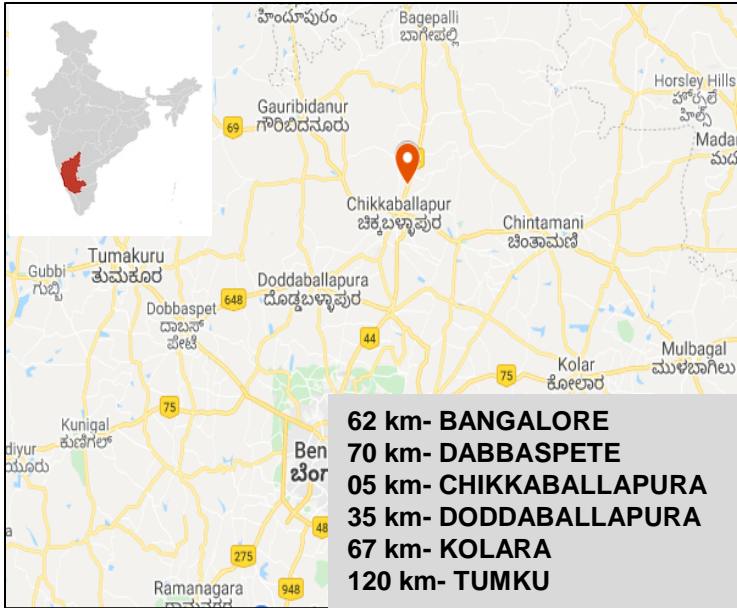
South Zone Sites



Site Description (Click to go to PIM)	State	Area (Ha)	GPS (Lat)	GPS (Long)	Location Map (Link to external URL)
Dobbaspet to Sarijapura/NH207/46+480/LHS/Bangalore/Karnataka	Karnataka	5.01	13.273336	77.642249	click for location map
Dobbaspet to Sarijapura/NH207/22+930/RHS/Bangalore/Karnataka	Karnataka	5.21	13.2928	77.4452	click for location map
Surathkal to Chitradurga/NH50/336+530/RHS/Chitradurga/Karnataka	Karnataka	3.15	14.917258	76.374519	click for location map
Surathkal to Chitradurga/NH50/389+396/LHS/Chitradurga/Karnataka	Karnataka	4.23	14.481553	76.406613	click for location map
Madurai to Paramakudi/NH87/40+300/LHS/Madurai/TamilNadu	Tamil Nadu	1.81	9.731148	78.4040184	click for location map
Madurai to Paramakudi/NH87/88+900/RHS/Madurai/TamilNadu	Tamil Nadu	1.09	9.4595675	78.6579094	click for location map
Tirupathi to Tirupathi/NH205/304+600/RHS/Chennai/Andhra Pradesh	Andhra Pradesh	2.03	13.535969	79.536579	click for location map
NH 16, Km 0+000 to Krishnapatnam Port, Km 8+000/NH16/1+200/LHS/Nellore/AndhraPradesh	Andhra Pradesh	1.012	14.293505	79.924427	click for location map
Ankola to Hospet/NH63/149+650/LHS/Dharwad/Karnataka	Karnataka	5	15.365986	75.251687	click for location map
Ankola to Hospet/NH63/177+950/RHS/Dharwad/Karnataka	Karnataka	5	15.428154	75.491572	click for location map
Ankola to Hospet/NH63/228+250/RHS/Dharwad/Karnataka	Karnataka	5	15.3907709	75.925254	click for location map
Ankola to Hospet/NH63/260+350/LHS/Dharwad/Karnataka	Karnataka	5	15.342834	76.187961	click for location map
Villukuri to Kanniyakumari/NH47/77+900/RHS/Nagercoil/Tamil Nadu	Tamil Nadu	5.28	8.2045034	77.4174874	click for location map
Kolkata to Chennai/NH5/663+600/LHS/Visakhapatnam/Andhra Pradesh	Andhra Pradesh	0.58	18.0103	83.4835	click for location map
Yadgiri to Warangal/NH163/65+725/LHS/Warangal/Telangana	Telangana	2.5	17.623537	79.016205	click for location map
Madurai to Madurai/NH7/84+00/LHS/Madurai/TamilNadu	Tamil Nadu	5.26	9.314429	77.918814	click for location map
Kolkata to Chennai/NH5/680+400/RHS/Visakhapatnam/Andhra Pradesh	Andhra Pradesh	0.63	17.9026	83.399	click for location map
NH16/1329+510/LHS/Nellore/Andhra Pradesh	Andhra Pradesh	5.87	14.8235	79.9932	click for location map
Hyderabad to Bangalore/NH44/54+55/LHS/Hyderabad/Telangana	Telangana	4.57	17.006	78.1953	click for location map
Hyderabad to Nagpur/NH44/263+610/RHS/Nirmal/Telangana	Telangana	3.37	19.164	78.4704	click for location map

Site Code - Hyderabad to Bangalore/NH7/502+640/RHS/Bangalore/Karnataka

- Site Location



Parameters	Details
NH Number	7
Geo Coordinates	13.4717, 77.7447
Chainage	502+640 (R.H.S)
Local Access	Directly from NH 7 via service road
Land Area	3.19 Ha
Location of nearest Toll Plaza	NA

- Site Attributes



- Site Photographs



Site Code - Hyderabad to Bangalore/NH44/250+500/LHS/Anantapur/Andhra Pradesh

• Site Location



Parameters	Details
NH Number	44
Geo Coordinates	15.4866,77.9025
Chainage	250+500 (L.H.S)
Local Access	Directly from NH 44 via service road
Land Area	2.26 Ha
Location of nearest Toll Plaza	Amakathadu Toll Plaza

• Site Attributes

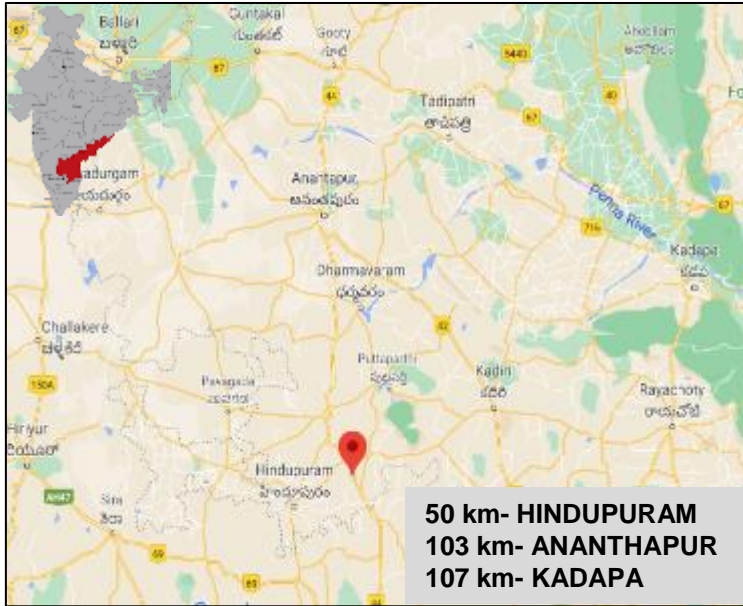


• Site Photographs



Site Code - Bangalore to Anantpur/NH44/447+448/RHS/Anantapur/Andhra Pradesh

- Site Location



Parameters	Details
NH Number	44
Geo Coordinates	13.9185,77.6914
Chainage	447+448 (R.H.S)
Local Access	Directly from NH 44 via service road
Land Area	2.0 Ha
Location of nearest Toll Plaza	Bagepalli Toll Plaza

- Site Attributes

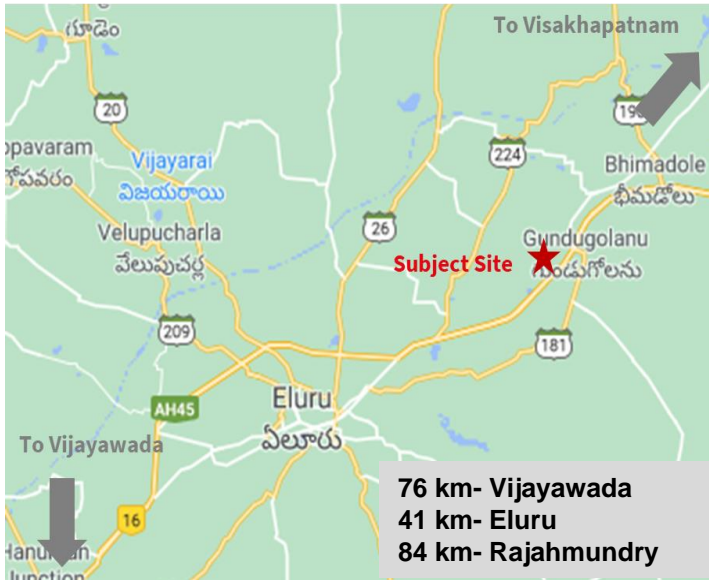


- Site Photographs



Site Code – Kolkata to Chennai/1NH16/1023+080/RHS/Vijayawada/Andhra Pradesh

- Site Location



Parameters	Details
NH Number	16 (Old Number 5)
Geo Coordinates	16.781774, 81.223624
Chainage	1023+080 (R.H.S)
Local Access	Directly from NH 16 service road
Land Area	6.97 Ha
Location of nearest Toll Plaza	Unguturu Toll Plaza (24 km)

- Site Attributes



Site images



Site Frontage



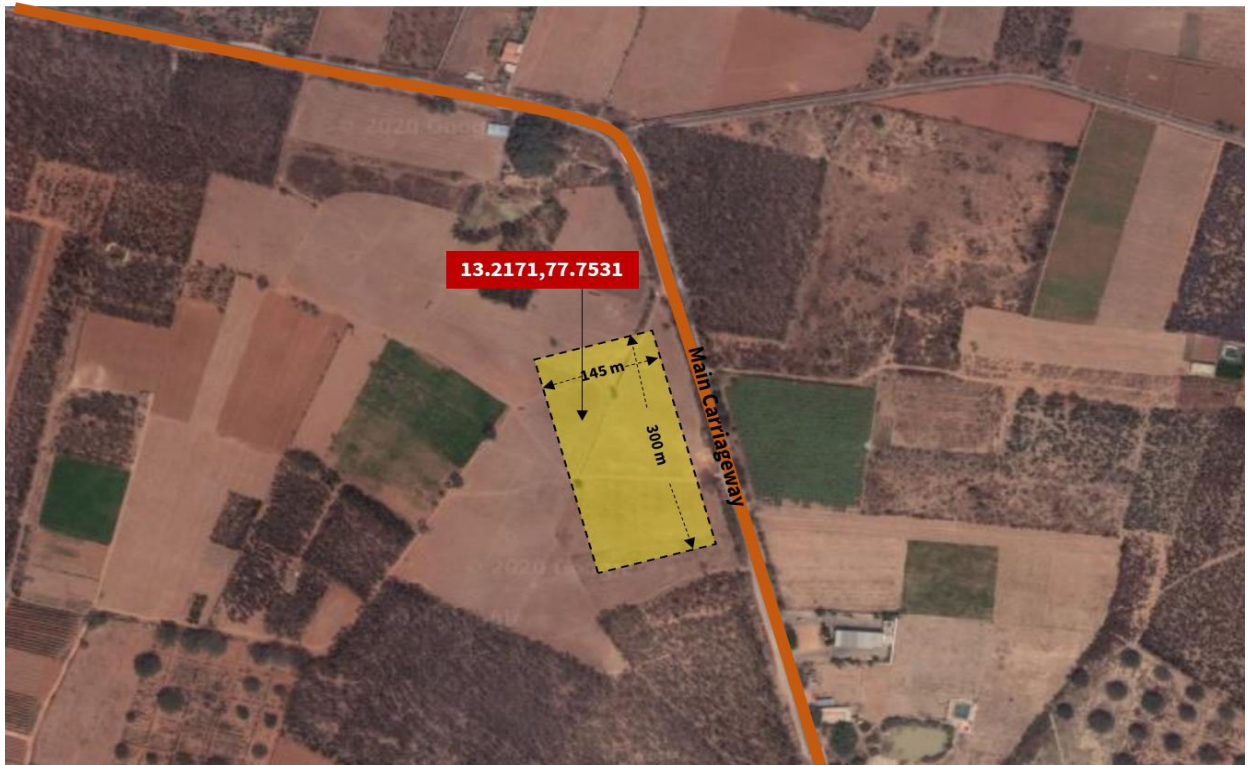
Site from Highway

Site Code – Dobbaspet to Sarjapura/NH207/74+900/LHS/Bangalore/Karnataka

- Site Location

Parameters	Details
NH Number	207
Geo Coordinates	13.2171,77.7531
Chainage	74+900 (L.H.S)
Local Access	Directly from NH 207 via service road
Land Area	5.24 Ha
Location of nearest Toll Plaza	Bangalore International Airport Toll Plaza (KA)

- Site Attributes

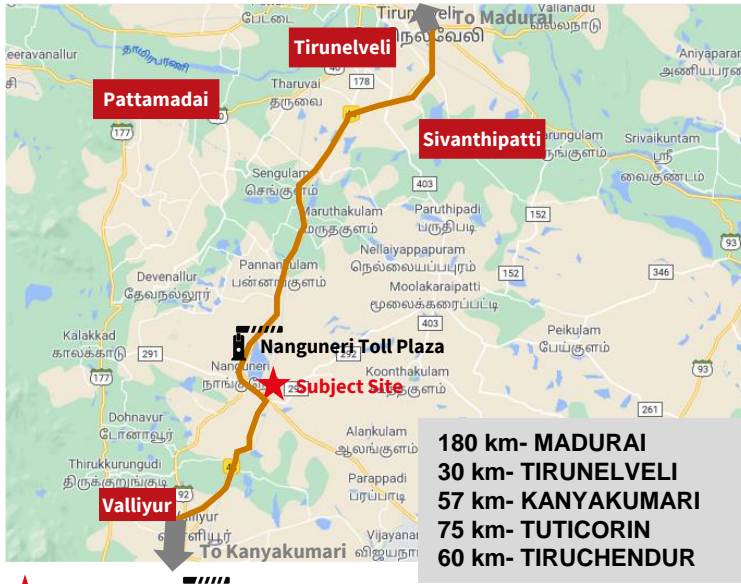


- Site Photographs



Site Code - Madurai to Madurai/NH44/186+500/LHS/Madurai/TamilNadu

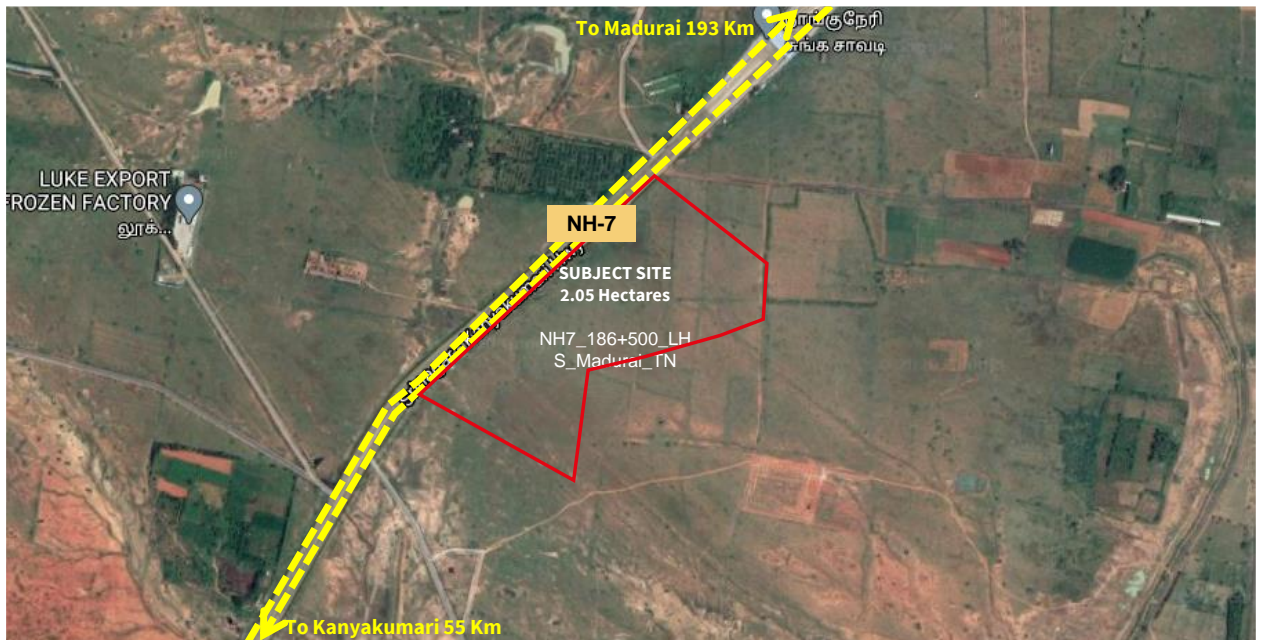
• Site Location



Parameters	Details
NH Number	NH44 (Old NH 7)
Geo Coordinates	8.5201044, 77.6562191
Chainage	186+ 500 (L.H.S)
Local Access	Directly from NH 7 via service road
Land Area	2.14 Ha
Location of nearest Toll Plaza	Nanguneri Toll Plaza (0.3 km)

★ Subject Site 🚧 Nanguneri Toll Plaza

• Site Attributes

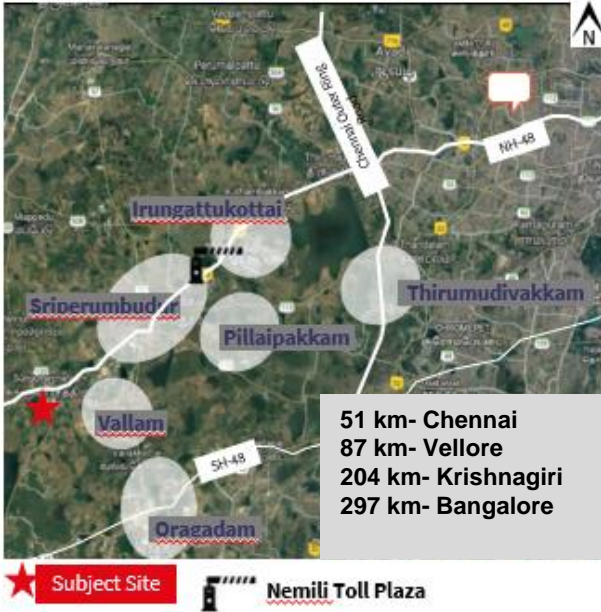


• Site Images



Site Code - Chennai to Vellore/NH48/50+800/LHS/Kancheepuram/Tamil Nadu

- Site Location



Parameters	Details
NH Number	NH 48
Geo Coordinates	12.921900, 79.874400
Chainage	50+ 800 (L.H.S)
Local Access	Directly from NH 48
Land Area	3.15 Ha
Location of nearest Toll Plaza	Nemili Toll Plaza (13.0 km)

- Site Attributes



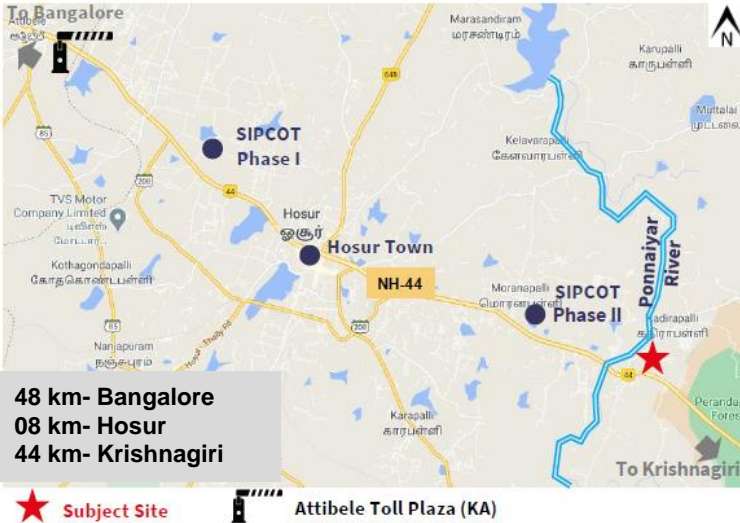
- Site Images



Site Code - Hosur to Krishnagiri/NH44/47+100/LHS/Krishnagiri/TamilNadu

- Site Location

Parameters	Details
NH Number	NH 44
Geo Coordinates	12.712594, 77.887774
Chainage	47+ 100 (L.H.S)
Local Access	Directly from NH 44 via service road
Land Area	1.52 Ha
Location of nearest Toll Plaza	Attibele Toll Plaza (KA) (16.1 km)



- Site Attributes

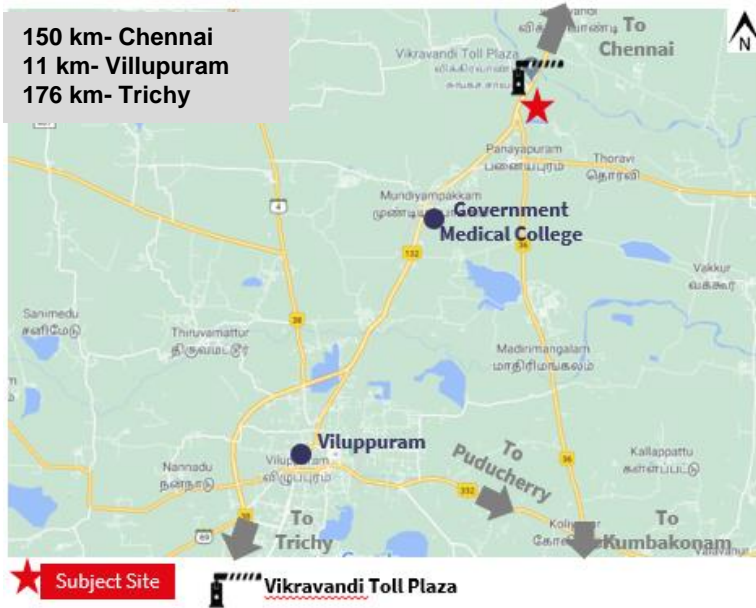


- Site Images



Site Code - Tindivanam to Ulundurpet/NH45/150+600/LHS/Villupuram/ Tamil Nadu

- Site Location



Parameters	Details
NH Number	NH 45
Geo Coordinates	12.0209725, 79.5363061
Chainage	150 + 600 (L.H.S)
Local Access	Directly from NH 45 via service road
Land Area	0.68 Ha
Location of nearest Toll Plaza	Vikravandi Toll Plaza (0.35 km)

- Site Attributes



- Site Images



Site Code - Madurai to Madurai/NH44/74+200/RHS/Madurai/TamilNadu

• Site Location



★ Subject Site Etturvattam Toll Plaza

Parameters	Details
NH Number	New NH 44 (Old NH 7)
Geo Coordinates	9.398599, 77.9158567
Chainage	74+200 (R.H.S)
Local Access	Directly from NH 7 via service road
Land Area	0.99 Ha
Location of nearest Toll Plaza	Etturvattam Toll Plaza (1.5 km)

80 km- MADURAI
 110 km- TUTICORIN
 28 km- SIVAKASI
 25 km- VIRUDHUNAGAR
 95 km- TIRUNELVELI
 140 km- TIRUCHENDUR

• Site Attributes

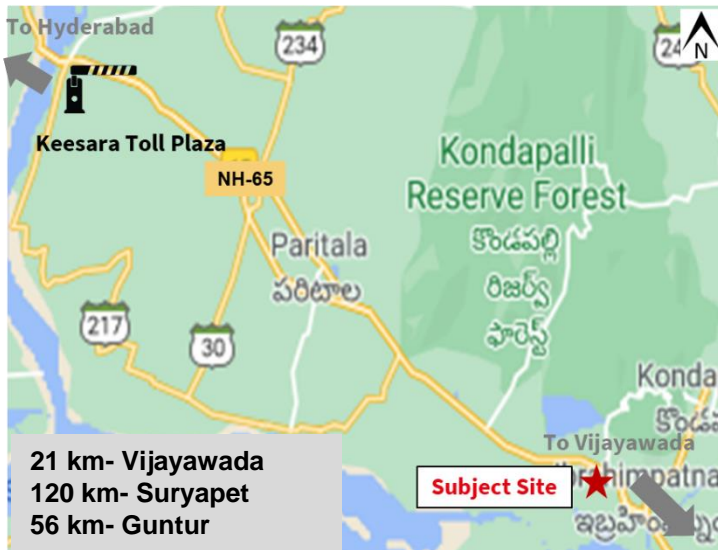


• Site Images



Site Code – Hyderabad to Machilipatnam/NH65/258+000/LHS/Vijayawada/Andhra Pradesh

- Site Location



Parameters	Details
NH Number	65 (Old Number 9)
Geo Coordinates	16.590047, 80.517362
Chainage	258+000 (L.H.S)
Local Access	Directly from NH 65
Land Area	1.97 Ha
Location of nearest Toll Plaza	Keesara Toll Plaza (26 km)

- Site Attributes



Site images



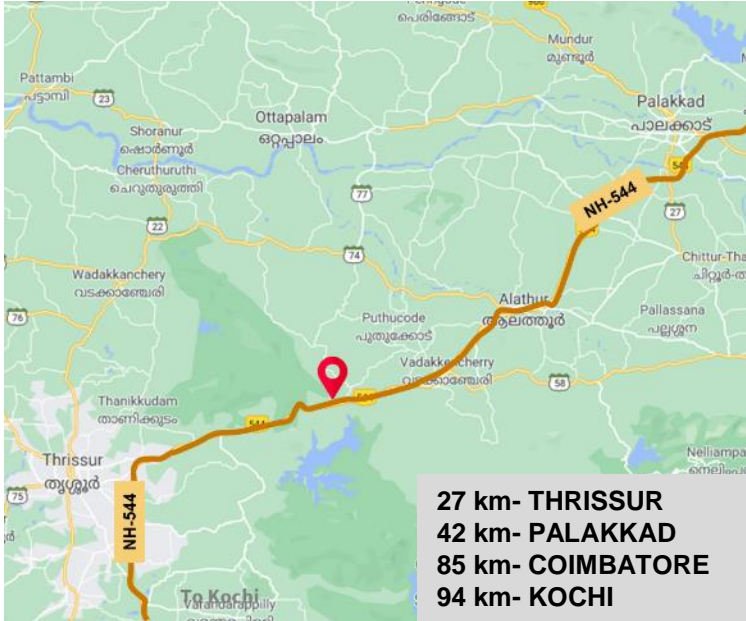
Site Frontage



Site from Highway

Site Code - Vadakkancheri to Thrissur/ NH544/ 242+750/ RHS/ Palakkad/ Kerala

• Site Location



Parameters	Details
NH Number	544
Geo Coordinates	10.583080, 76.430631
Chainage	242+750 (R.H.S)
Local Access	Directly from NH 544 via service road
Land Area	1.01 Ha
Location of nearest Toll Plaza	Panniyankara Toll Plaza (3.2 km)

• Site Attributes

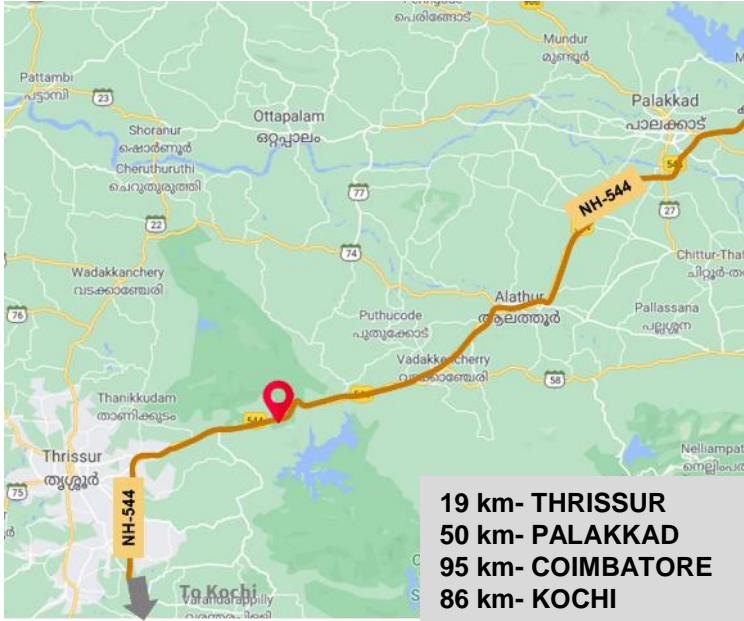


• Site Photographs



Site Code - Vadakkancheri to Thrissur/ NH544/ 249+850/ LHS/ Palakkad/ Kerala

- Site Location



Parameters	Details
NH Number	544
Geo Coordinates	10.563809, 76.368695
Chainage	249+850 (I.H.S)
Local Access	Directly from NH 544 via service road
Land Area	1.14 Ha
Location of nearest Toll Plaza	Panniyankara Toll Plaza (11 km)

- Site Attributes



- Site Photographs



Site Code - Krishnagiri to Hosur/NH44/77+800/RHS/Chennai/TamilNadu

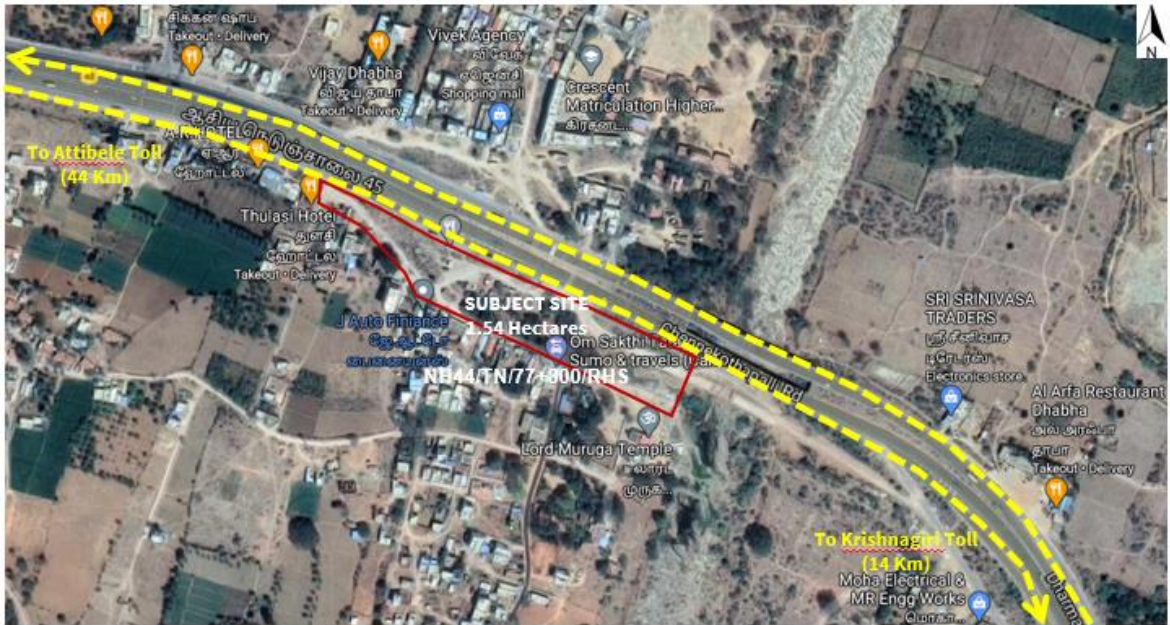
- Site Location

Parameters	Details
NH Number	NH 44
Geo Coordinates	12.600363, 78.129174
Chainage	77+ 800 (R.H.S)
Local Access	Directly from NH 44 via service road
Land Area	1.54 Ha
Location of nearest Toll Plaza	Krishnagiri Toll Plaza (16.1 km)



★ **Subject Site**
 Krishnagiri Toll Plaza

- Site Attributes

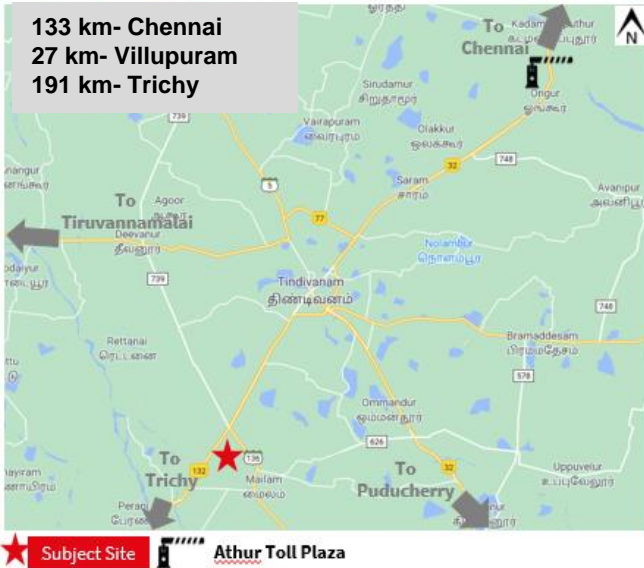


- Site Images



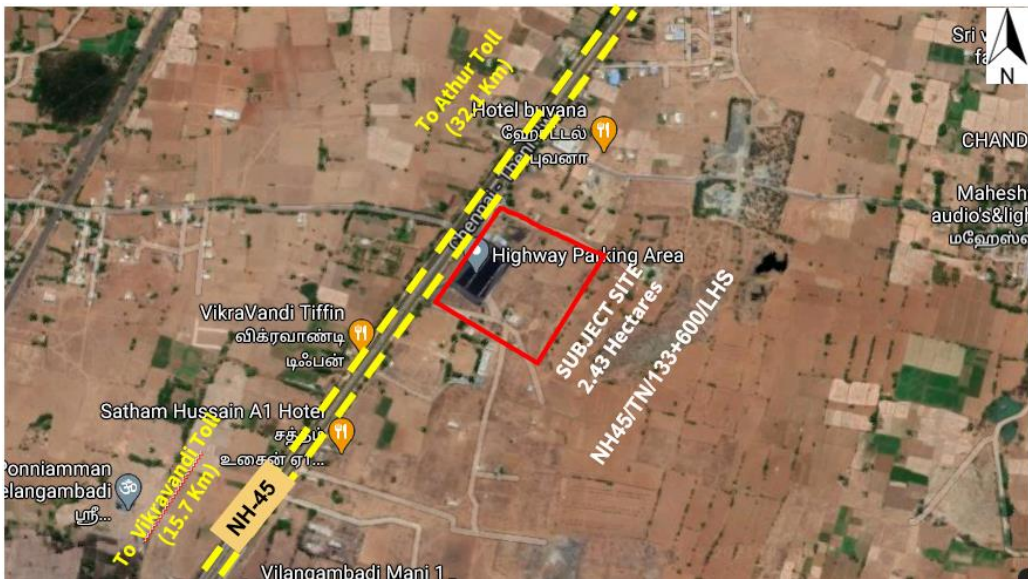
Site Code - Tindivanam to Ulundurpet/ NH45/ 133+600/ LHS/ Villupuram/ Tamil Nadu

- Site Location



Parameters	Details
NH Number	NH 45
Geo Coordinates	12.144521, 79.600070
Chainage	133 + 600 (L.H.S)
Local Access	Directly from NH 45
Land Area	2.43 Ha
Location of nearest Toll Plaza	Vikravandi Toll Plaza (15.7 km)

- Site Attributes

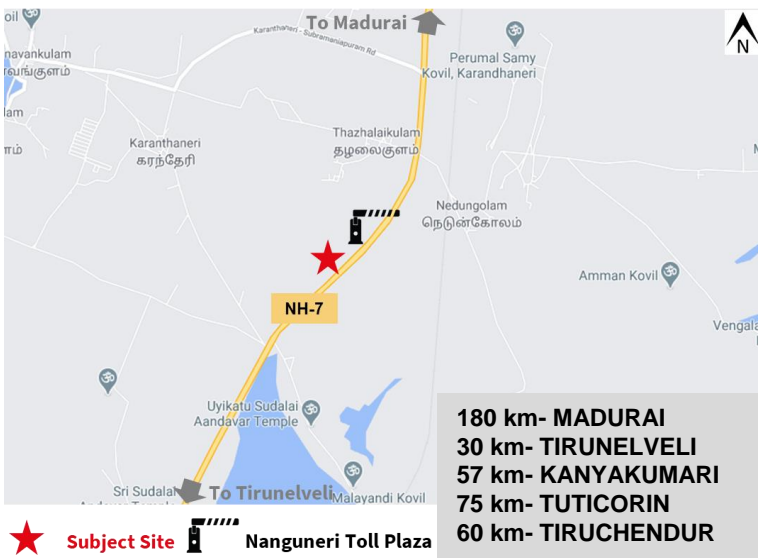


- Site Images



Site Code - Madurai to Madurai/NH44/186+500/RHS/Madurai/Tamil Nadu

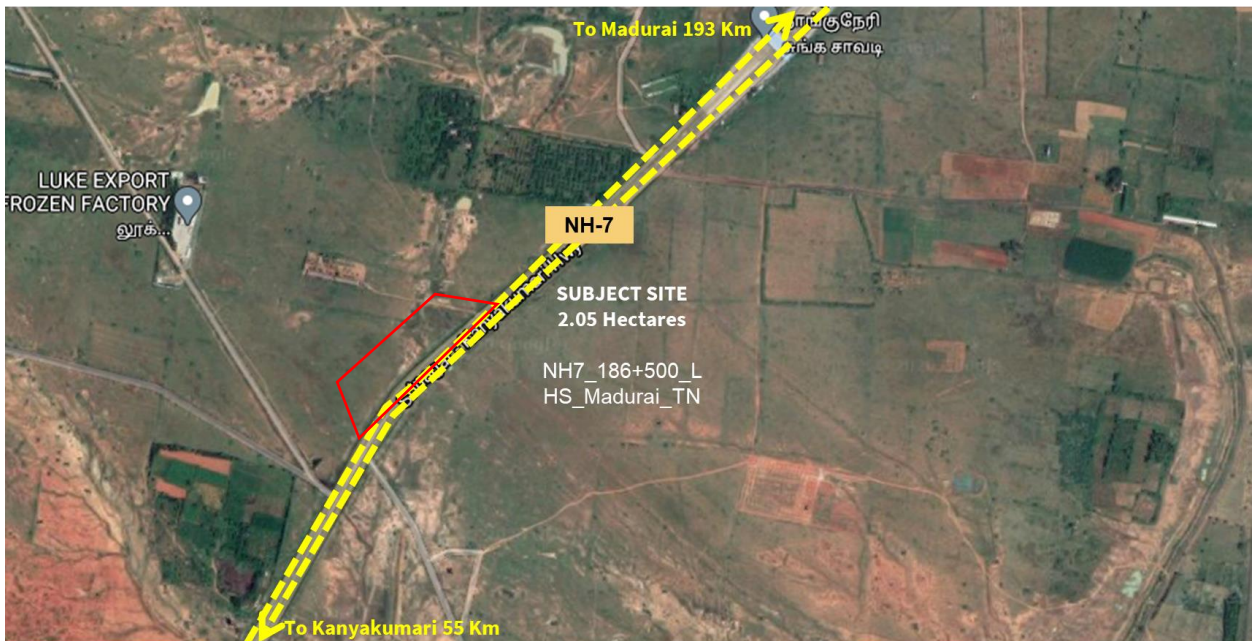
- Site Location



Parameters	Details
NH Number	NH 44 (Old NH 7)
Geo Coordinates	8.5201044, 77.6562191
Chainage	186+ 500 (R.H.S)
Local Access	Directly from NH 7 via service road
Land Area	2.20 Ha
Location of nearest Toll Plaza	Nanguneri Toll Plaza (0.3 km)

★ Subject Site Nanguneri Toll Plaza

- Site Attributes

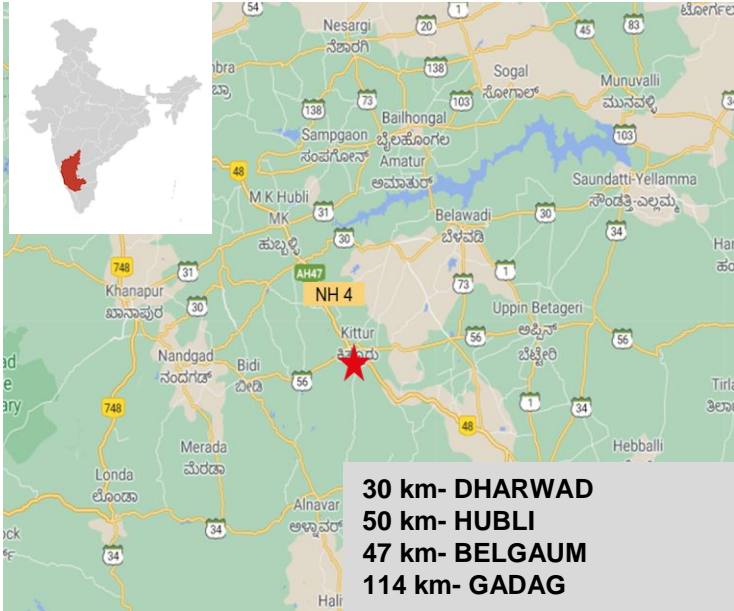


- Site Images



Site Code – Bangalore to Belgaum/NH4/457+648/LHS/Dharwad/Karnataka

- Site Location



Parameters	Details
NH Number	4
Geo Coordinates	15.587195, 74.784979
Chainage	457+648 (L.H.S)
Local Access	Directly from NH 4 via service road
Land Area	3.87 Ha
Location of nearest Toll Plaza	Hirebagewadi Toll Plaza

- Site Attributes



- Site Photographs



Site Code – Walayar to Vadakkancheri/ NH544/ 186+500/ LHS/ Palakkad/ Kerala

- Site Location



Parameters	Details
NH Number	544
Geo Coordinates	10.8248, 76.8162
Chainage	186+500 (L.H.S)
Local Access	Directly from NH 544 via service road
Land Area	2.44 Ha
Location of nearest Toll Plaza	Pampampallam Toll Plaza

- Site Attributes



- Site Photographs



Site Code - Tindivanam to Ulundurpet/ NH45/ 186+400/ LHS/ Villupuram/ Tamil Nadu

- Site Location



Parameters	Details
NH Number	NH 45
Geo Coordinates	11.771473, 79.389085
Chainage	186 + 400 (L.H.S)
Local Access	Directly from NH 45
Land Area	1.38 Ha
Location of nearest Toll Plaza	Sengurichi Toll Plaza (10.5 km)

- Site Attributes



- Site Images



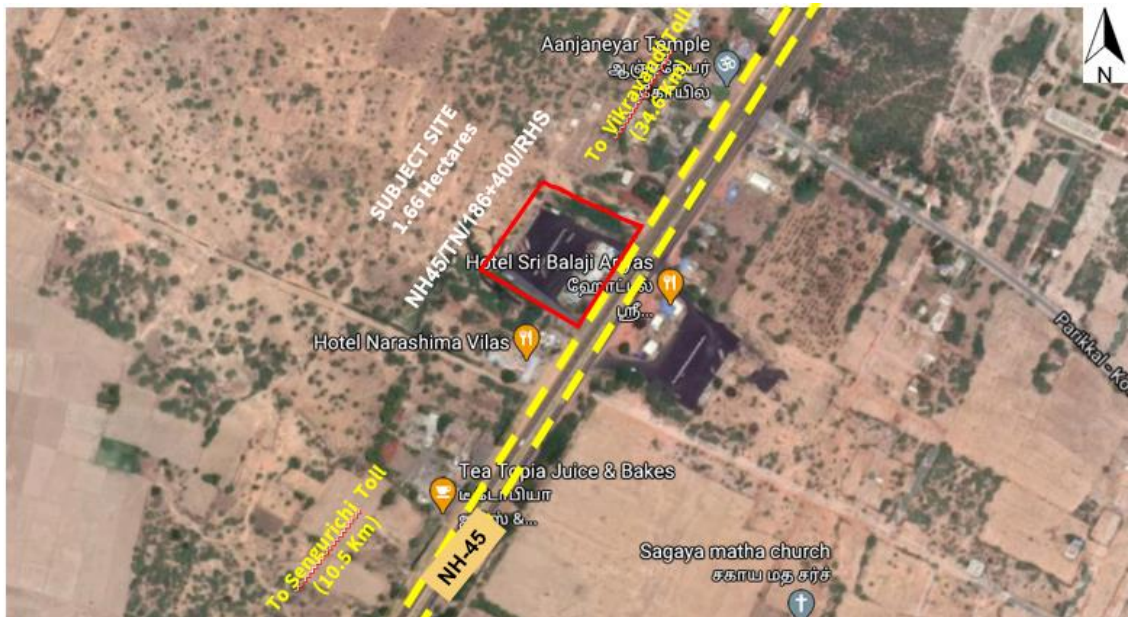
Site Code - Tindivanam to Ulundurpet/ NH45/ 186+400/ RHS/ Villupuram/ Tamil Nadu

- Site Location



Parameters	Details
NH Number	NH 45
Geo Coordinates	11.772111, 79.388397
Chainage	186 + 400 (R.H.S)
Local Access	Directly from NH 45
Land Area	1.66 Ha
Location of nearest Toll Plaza	Sengurichi Toll Plaza (10.5 km)

- Site Attributes

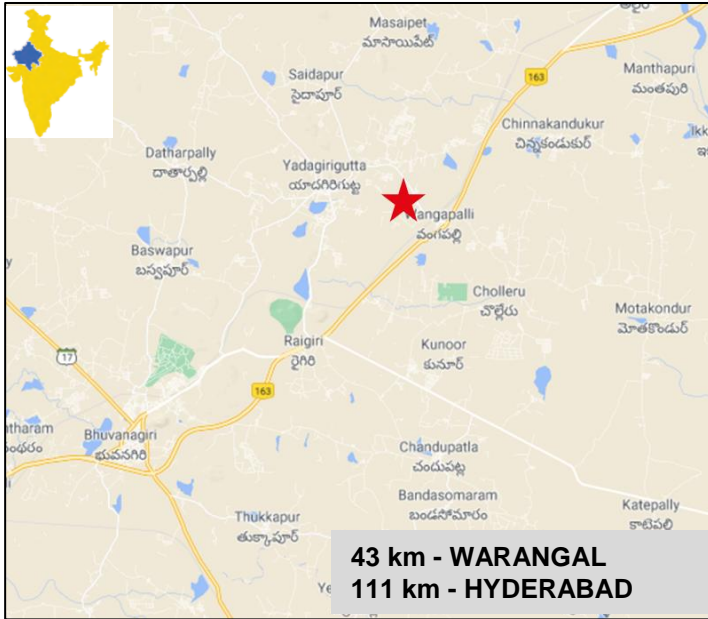


- Site Images



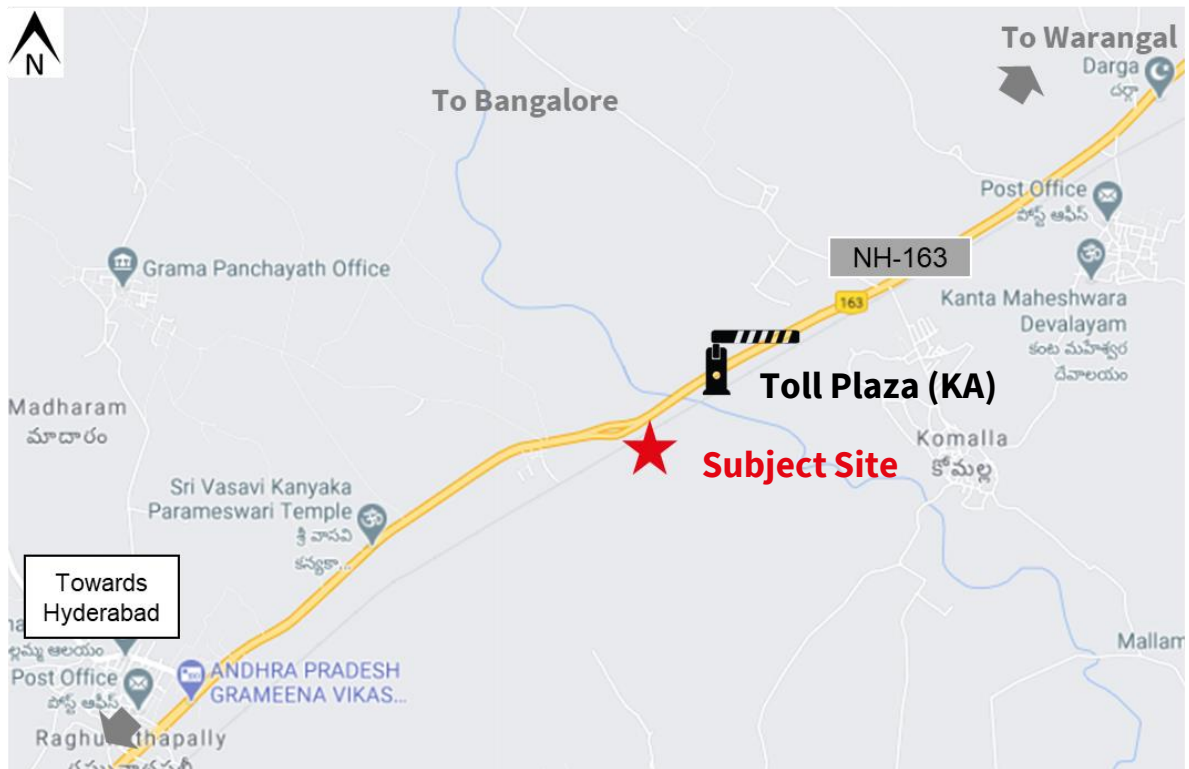
Site Code - Yadgiri to Warangal/NH163/101+500/RHS/Warangal/Telangana

- Site Location



Parameters	Details
NH Number	163
Geo Coordinates	17.777969, 79.285294
Chainage	101+500 (R.H.S)
Local Access	Directly from NH 163 via service road
Land Area	0.3 Ha
Location of nearest Toll Plaza	Toll Plaza (450 m)

- Site Macro Location Map



- Site Photographs



Site Code – Vadakkanchery to Thrissur/ NH544/ 218+800/ LHS/ Palakkad/ Kerala

- Site Location



Parameters	Details
NH Number	544
Geo Coordinates	10.695768, 76.588367
Chainage	218+800 (L.H.S)
Local Access	Directly from NH 544 via service road
Land Area	0.45 Ha
Location of nearest Toll Plaza	Pampampallam Toll Plaza

- Site Attributes

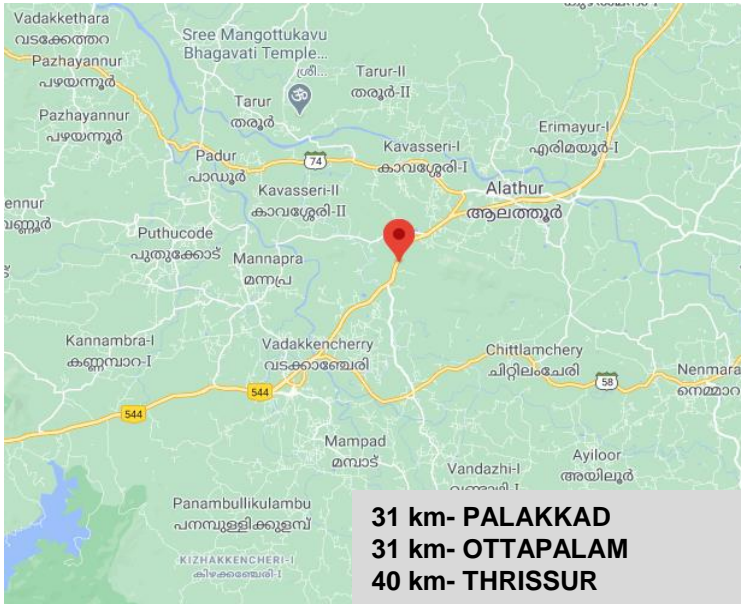


- Site Photographs



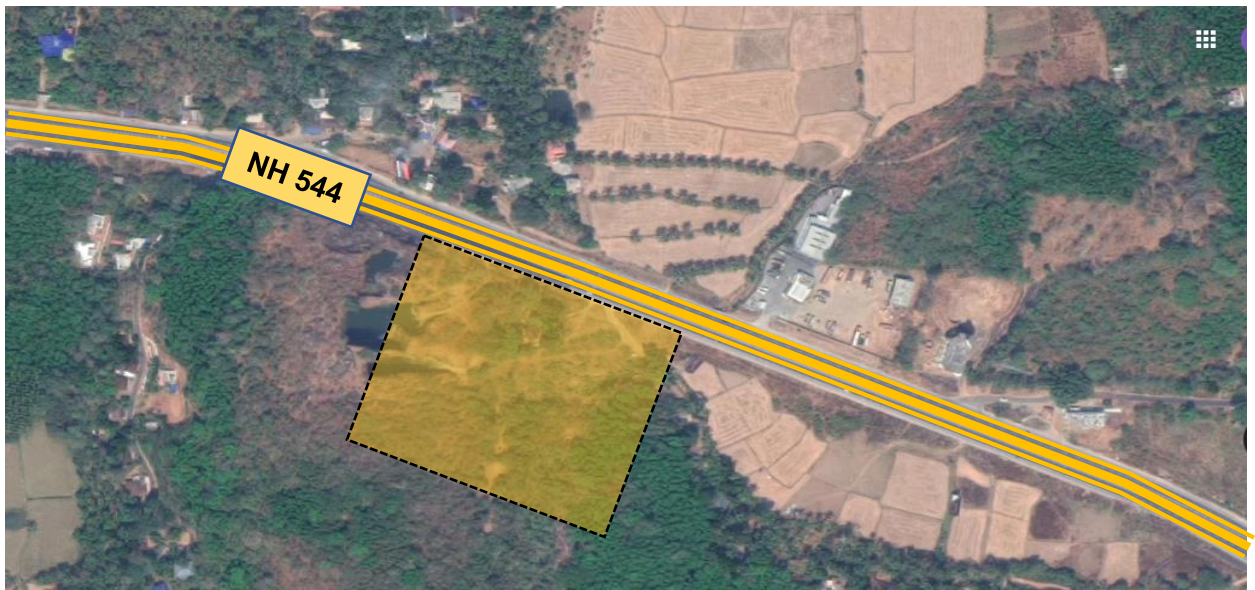
Site Code – Vadakkanchery to Thrissur/ NH544/ 231+100/ LHS/ Palakkad/ Kerala

- Site Location



Parameters	Details
NH Number	544
Geo Coordinates	10.628235, 76.513231
Chainage	231+100 (L.H.S)
Local Access	Directly from NH 544 via service road
Land Area	0.45 Ha
Location of nearest Toll Plaza	Pampampallam Toll Plaza

- Site Attributes



- Site Photographs



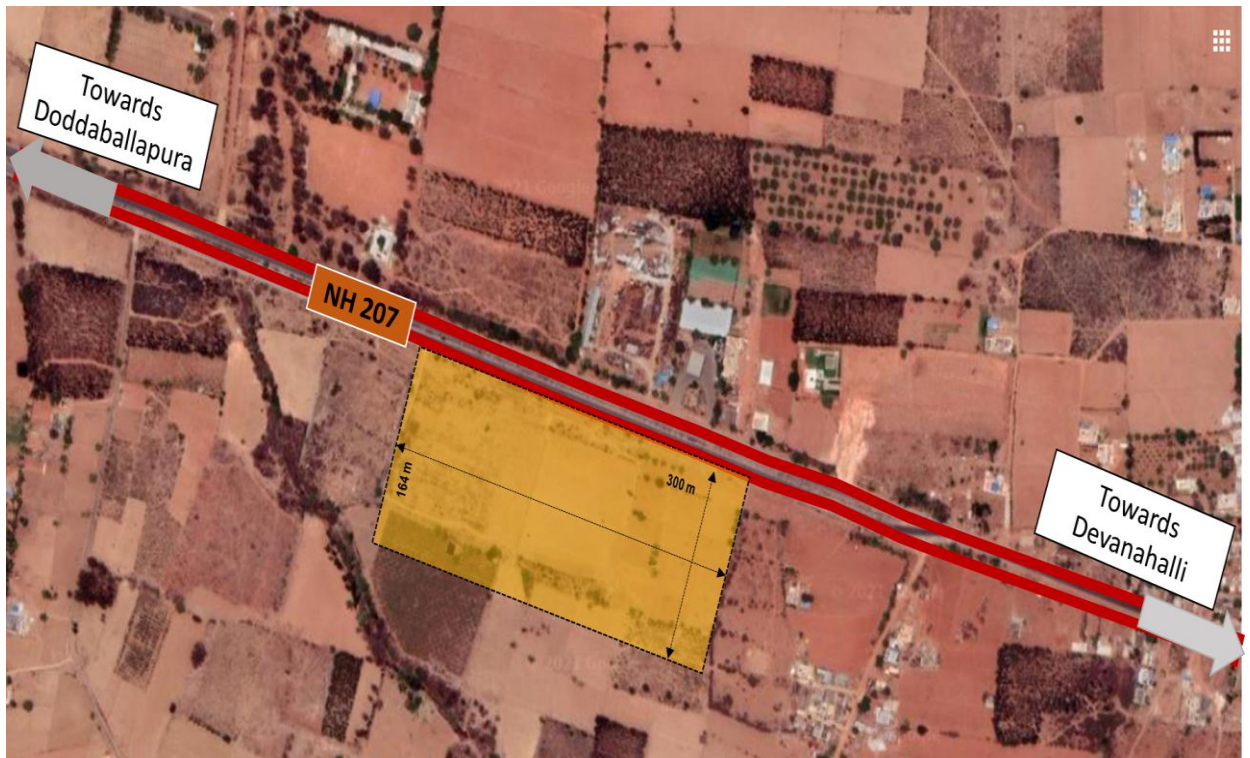
Site Code - Dobbaspeta to Sarjapura/NH207/46+480/LHS/Bangalore/Karnataka

- Site Location



Parameters	Details
NH Number	207
Geo Coordinates	13.2742,77.6416
Chainage	46+480 (L.H.S)
Local Access	Directly from NH 207 via service road
Land Area	5.01 Ha
Location of nearest Toll Plaza	Bangalore International Airport Toll Plaza (KA)

- Site Attributes

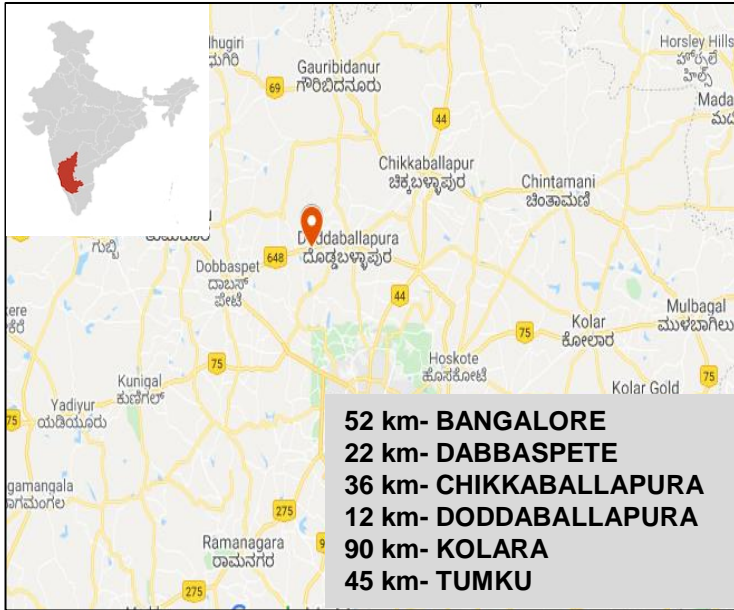


- Site Photographs



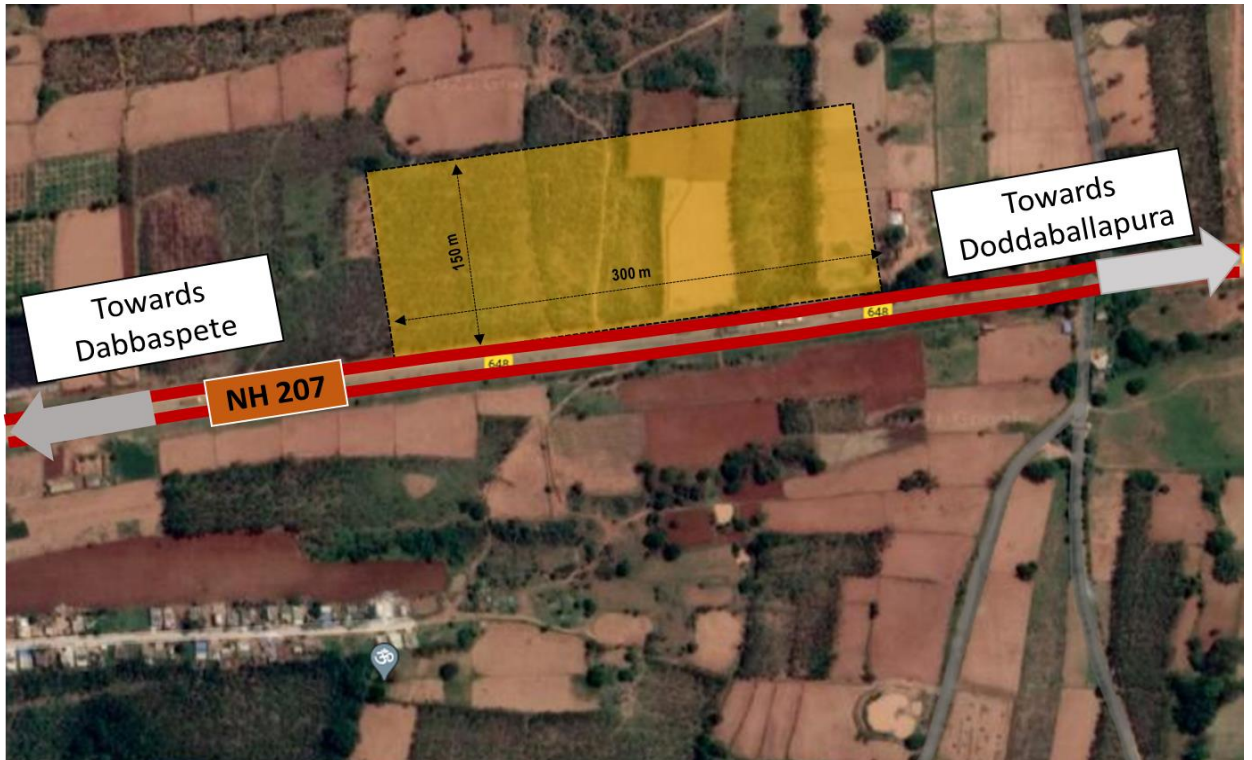
Site Code – Dobbaspet to Sarjapura/NH207/22+930/RHS/Bangalore/Karnataka

- Site Location



Parameters	Details
NH Number	207
Geo Coordinates	13.2928, 77.4452
Chainage	22+930 (R.H.S)
Local Access	Directly from NH 207 via service road
Land Area	5.21 Ha
Location of nearest Toll Plaza	YAPBTPL Toll 1B

- Site Attributes

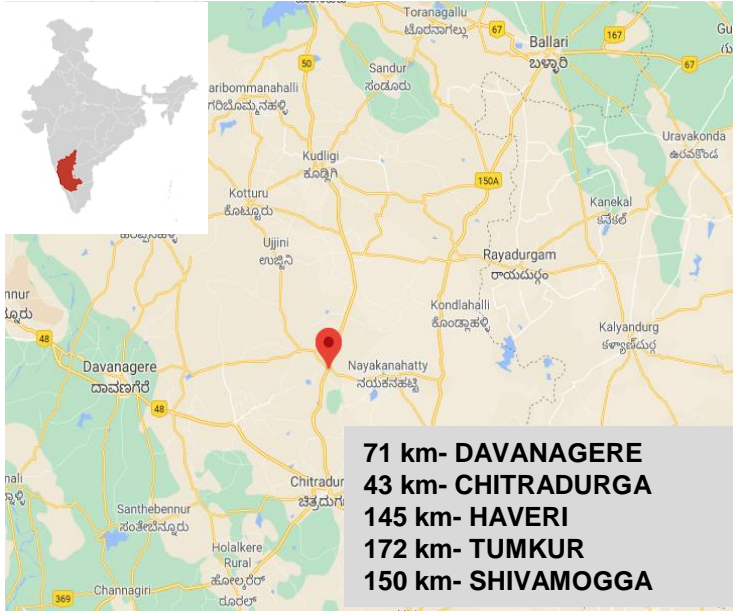


- Site Photographs



Site Code – Surathkal to Chitradurga/NH50/336+530/RHS/Chitradurga/ Karnataka

- Site Location



Parameters	Details
NH Number	NH50 (Old NH 13)
Geo Coordinates	14.484578, 76.407924
Chainage	336+530 (R.H.S)
Local Access	Directly from NH 13 via service road
Land Area	3.15 Ha
Location of nearest Toll Plaza	Kananakatte

- Site Attributes

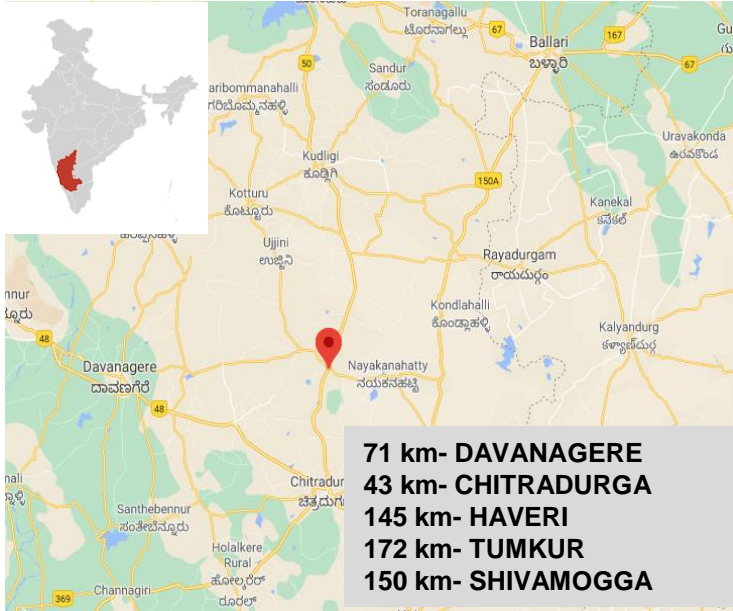


- Site Photographs



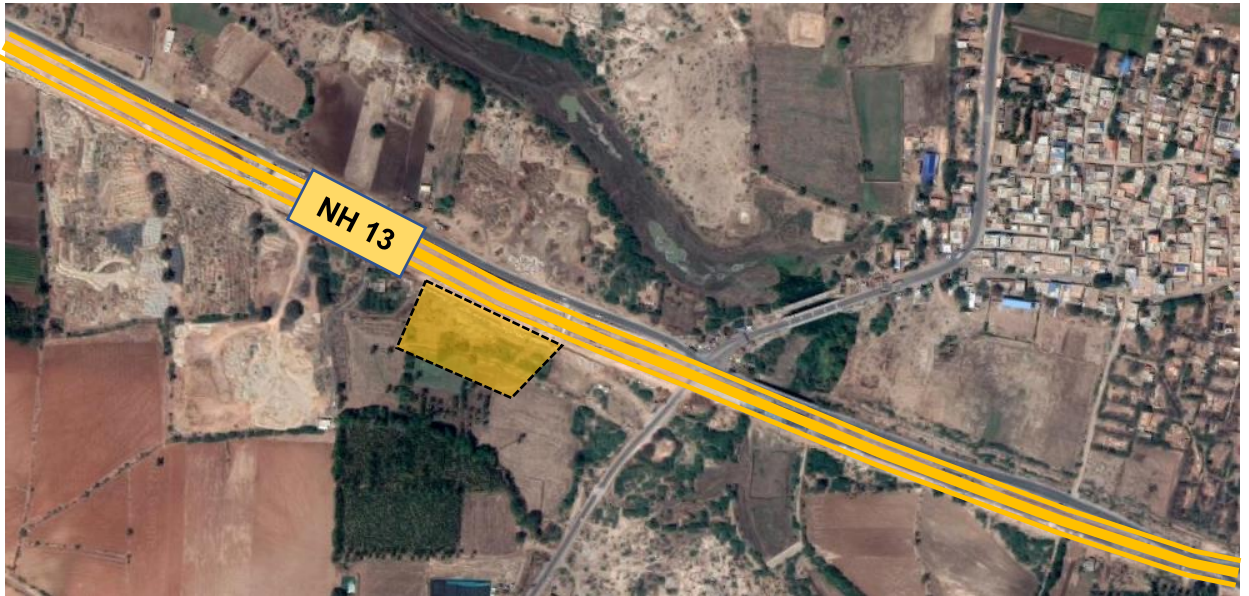
Site Code – Surathkal to Chitradurga/NH50/389+396/LHS/Chitradurga/ Karnataka

- Site Location



Parameters	Details
NH Number	NH50 (Old NH 13)
Geo Coordinates	14.484578, 76.407924
Chainage	389+396 (L.H.S)
Local Access	Directly from NH 13 via service road
Land Area	4.23 Ha
Location of nearest Toll Plaza	Kananakatte

- Site Attributes

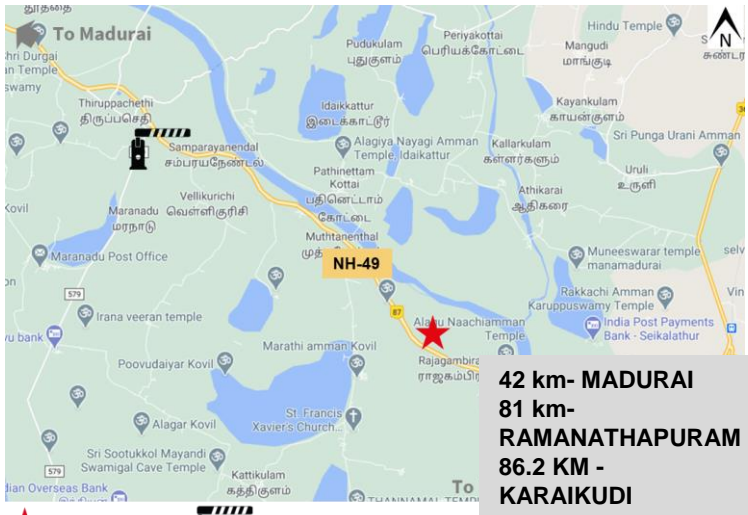


- Site Photographs



Site Code - Madurai to Paramakudi/NH87/40+300/LHS/Madurai/TamilNadu

• Site Location



Parameters	Details
NH Number	NH 87 (Old NH 49)
Geo Coordinates	9.731148, 78.4040184
Chainage	40+ 300 (LHS)
Local Access	Directly from NH 49
Land Area	1.81 Ha
Location of nearest Toll Plaza	Thiruppachethi Toll Plaza (10.1 km)

★ **Subject Site** Thiruppachethi Toll Plaza

• Site Attributes

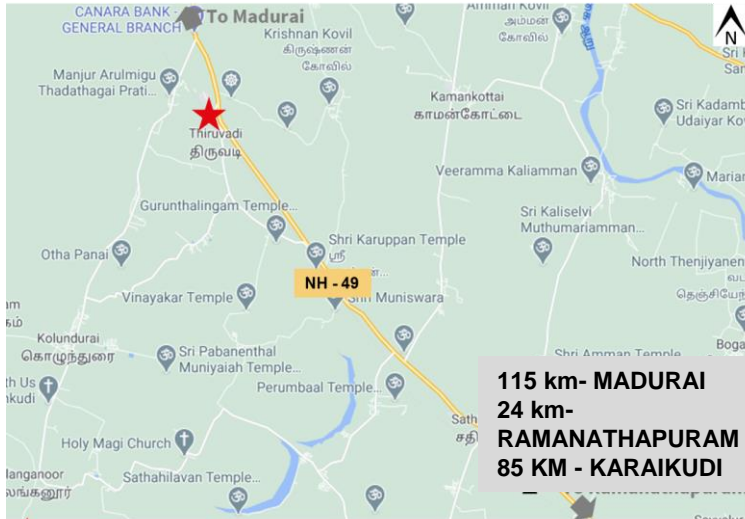


• Site Images



Site Code - Madurai to Paramakudi/NH87/88+900/RHS/Madurai/TamilNadu

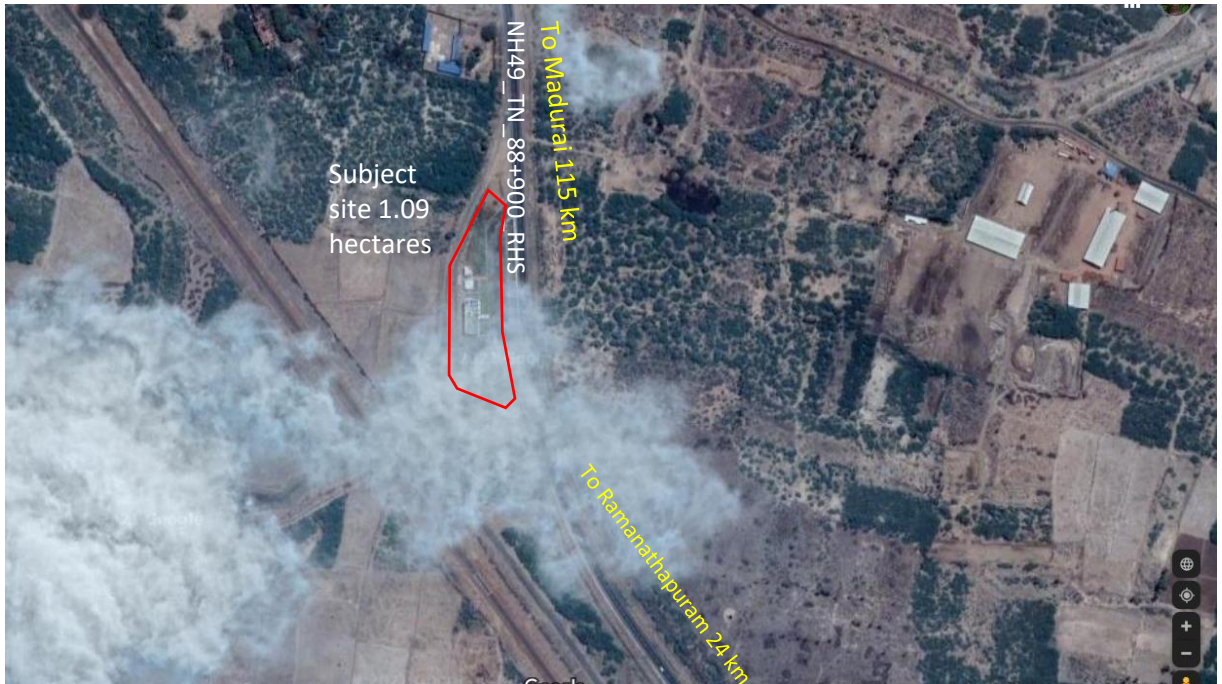
• Site Location



Parameters	Details
NH Number	NH 87 (Old NH 49)
Geo Coordinates	9.4595675, 78.6579094
Chainage	88+900 (RHS)
Local Access	Directly from NH 49
Land Area	1.09 Ha
Location of nearest Toll Plaza	Bogalur Toll Plaza (9.3 km)

★ Subject Site 🚧 Bogalur Toll Plaza

• Site Attributes



• Site Images



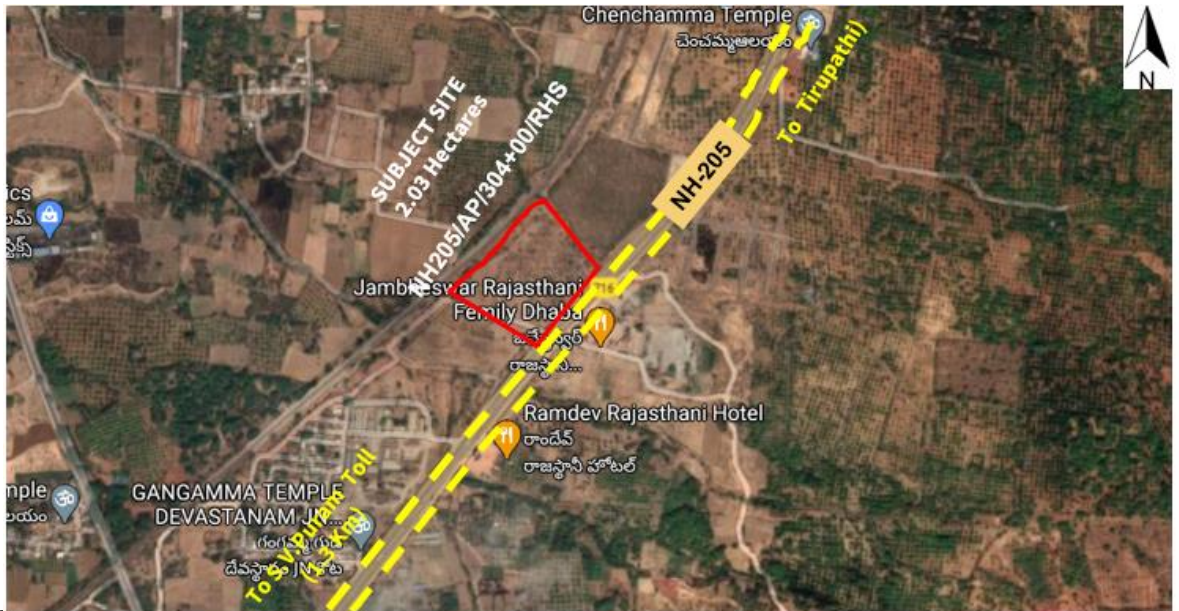
Site Code - Tirupathi to Tirupathi/NH205/304+600/RHS/Chennai/Andhra Pradesh

• Site Location



Parameters	Details
NH Number	NH 205
Geo Coordinates	13.536004, 79.536470
Chainage	304 + 600 (R.H.S)
Local Access	Directly from NH 205
Land Area	2.03 Ha
Location of nearest Toll Plaza	S.V.Puram Toll Plaza (AP) (1.3 km)

• Site Attributes

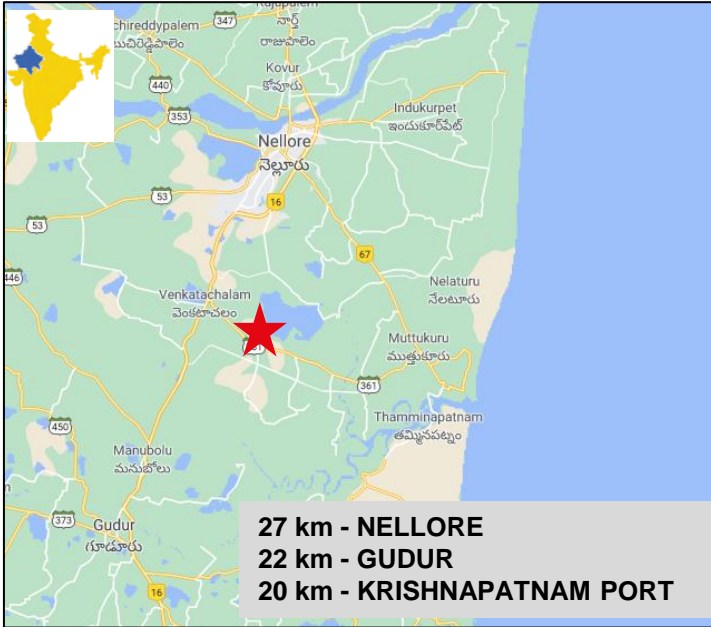


• Site images



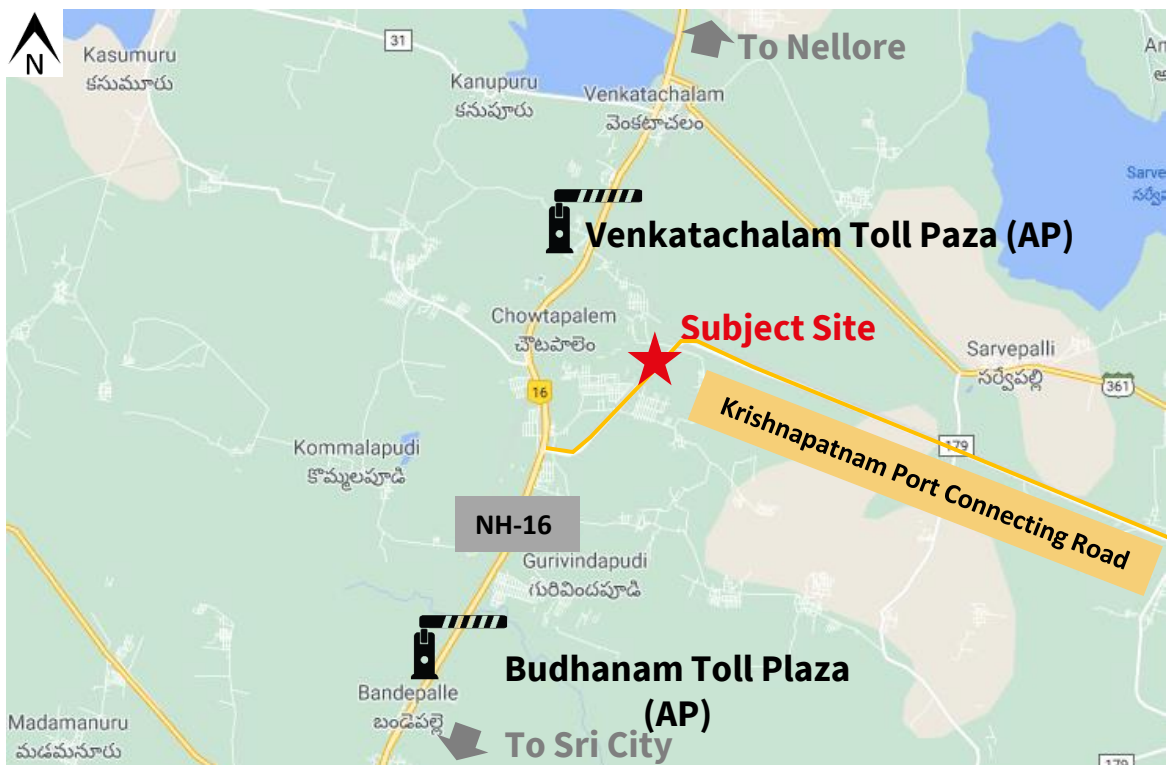
Site Code - NH 16, Km 0+000 to Krishnapatnam Port, Km 8+000/ NH16/ 1+200/LHS/Nellore/AndhraPradesh

• Site Location



Parameters	Details
NH Number	NH-16 (old NH-5)
Geo Coordinates	14.293505, 79.924427
Chainage	1+200 (LHS)
Local Access	Directly from Krishnapatnam Port Connecting Road
Land Area	1.012 Ha
Location of nearest Toll Plaza	Venkatachalam Toll Paza (8 km)

• Site Macro Location Map

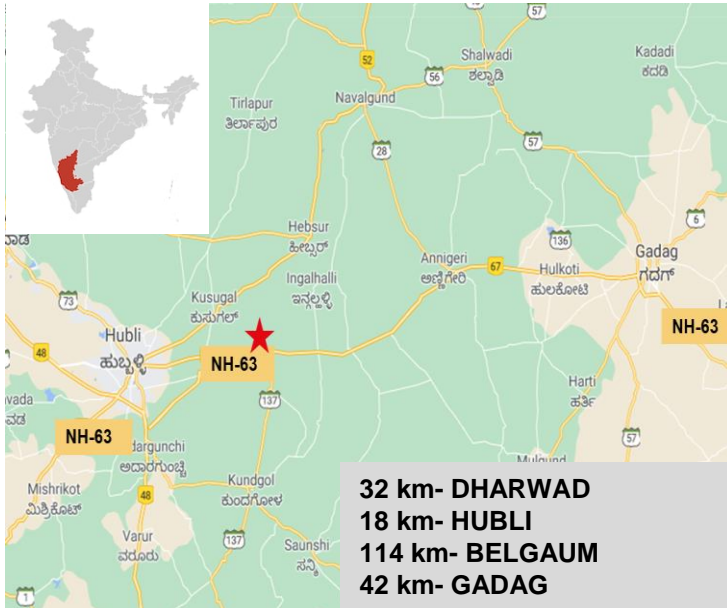


• Site Photographs



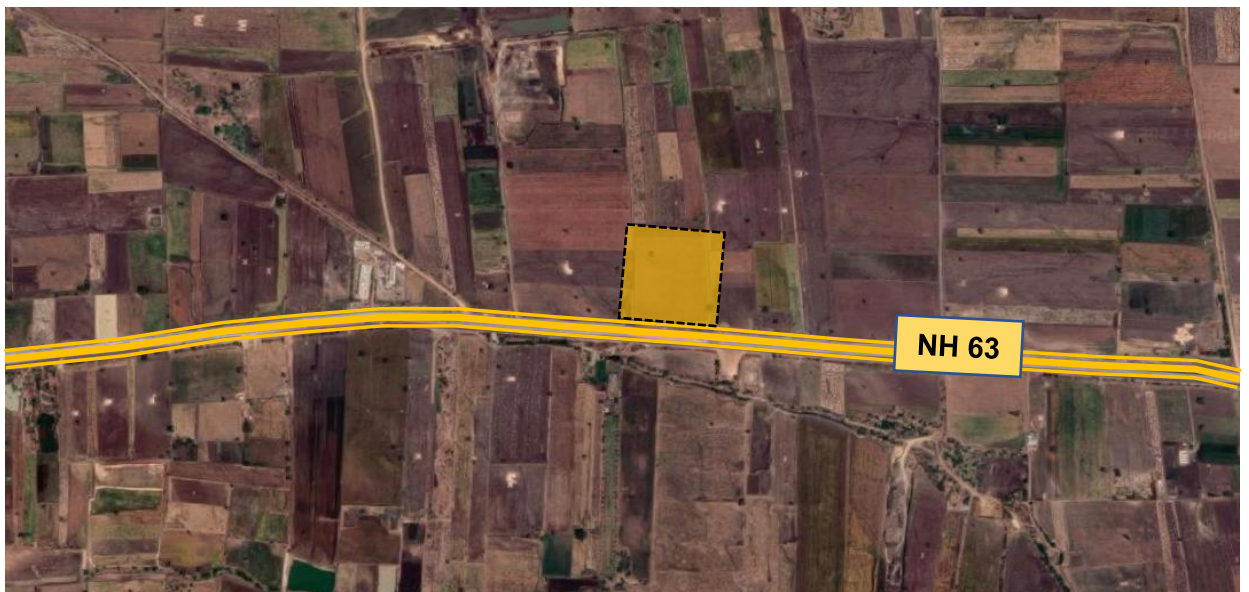
Site Code – Ankola to Hospet/NH63/149+650/LHS/Dharwad/Karnataka

- Site Location



Parameters	Details
NH Number	63
Geo Coordinates	15.365986, 75.251687
Chainage	149+650(L.H.S)
Local Access	Directly from NH 63 via service road
Land Area	4.9 Ha
Location of nearest Toll Plaza	NA

- Site Attributes

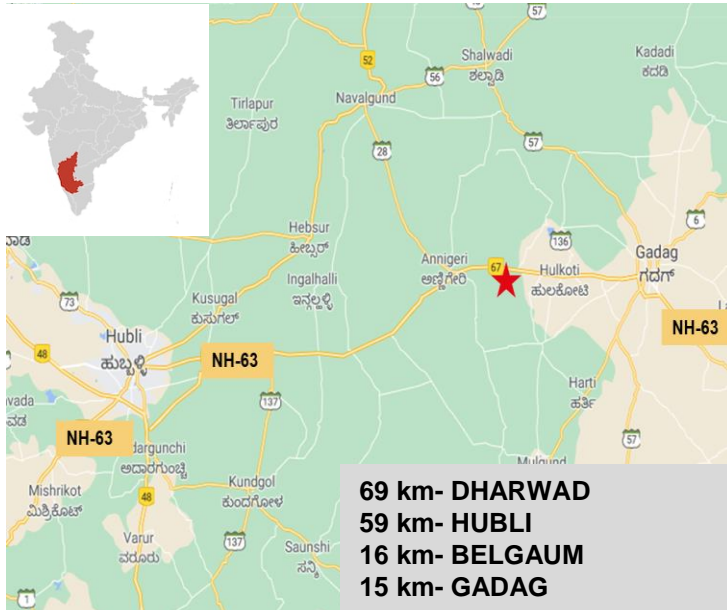


- Site Photographs



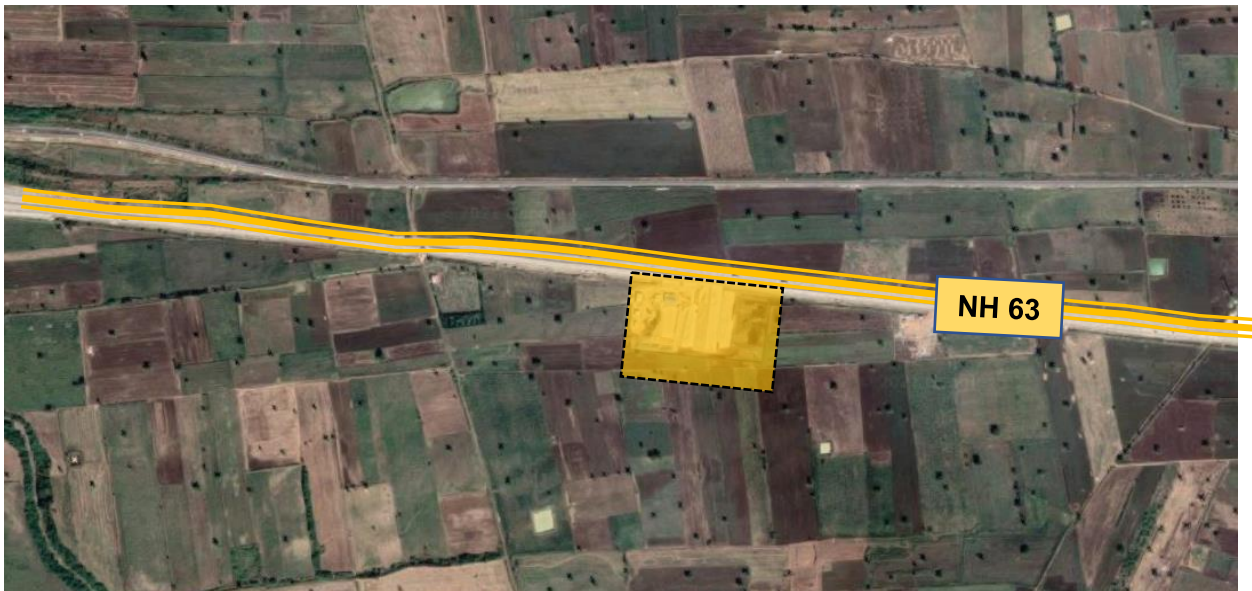
Site Code – Ankola to Hospet/NH63/177+950/RHS/Dharwad/Karnataka

- Site Location



Parameters	Details
NH Number	63
Geo Coordinates	15.428154, 75.491572
Chainage	177+950 (R.H.S)
Local Access	Directly from NH 63 via service road
Land Area	5.0 Ha
Location of nearest Toll Plaza	NA

- Site Attributes

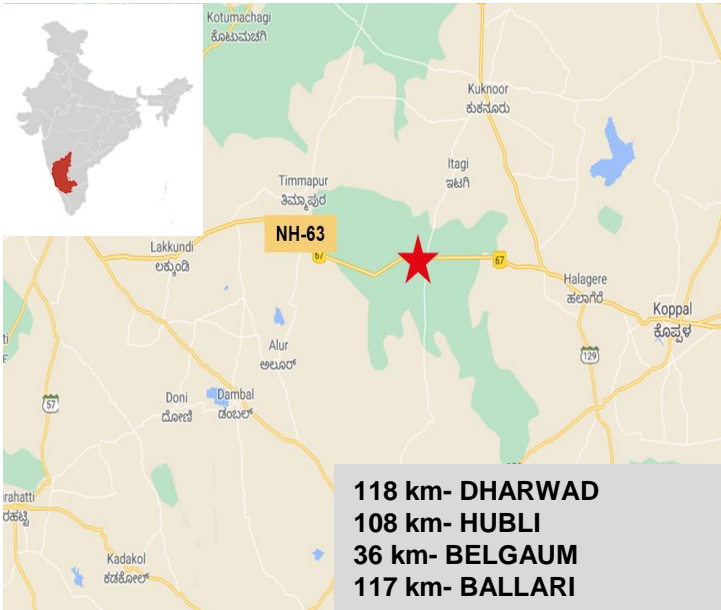


- Site Photographs



Site Code – Ankola to Hospet/NH63/228+250/RHS/Dharwad/Karnataka

- Site Location



Parameters	Details
NH Number	63
Geo Coordinates	15.3907709, 75.925254
Chainage	228+250 (R.H.S)
Local Access	Directly from NH 63 via service road
Land Area	5.0 Ha
Location of nearest Toll Plaza	NA

- Site Attributes

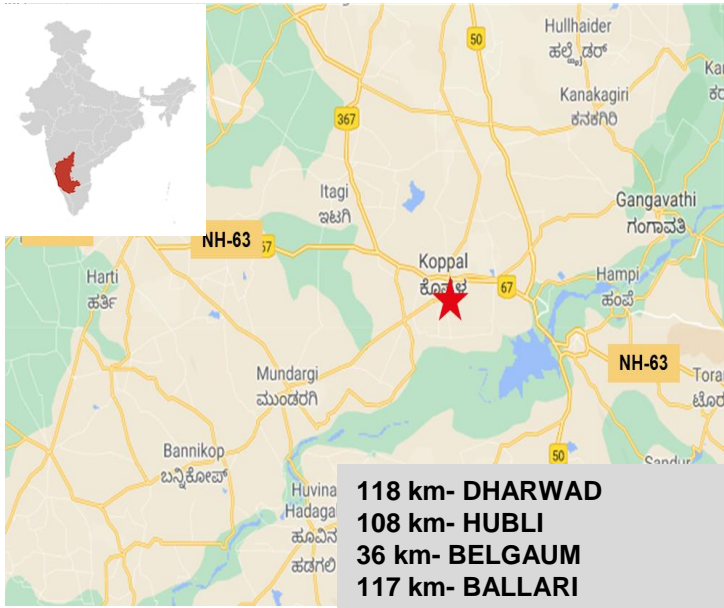


- Site Photographs



Site Code – Ankola to Hospet/NH63/260+350/LHS/Dharwad/Karnataka

- Site Location



Parameters	Details
NH Number	63
Geo Coordinates	15.342834, 76.187961
Chainage	260+350 (L.H.S)
Local Access	Directly from NH 63 via service road
Land Area	5.0 Ha
Location of nearest Toll Plaza	NA

- Site Attributes

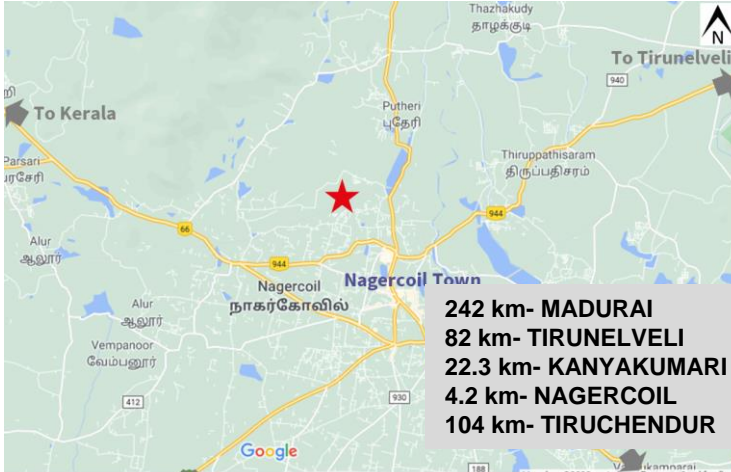


- Site Photographs



Site Code - Villukuri to Kanniyakumari/NH47/77+900/RHS/Nagercoil/Tamil Nadu

- Site Location



Parameters	Details
NH Number	47
Geo Coordinates	8.2045034, 77.4174874
Chainage	77+ 900
Local Access	Directly from NH 47
Land Area	5.28 Ha
Location of nearest Toll Plaza	Naganeri Toll Plaza (62.1 km)

★ Subject Site

- Site Attributes

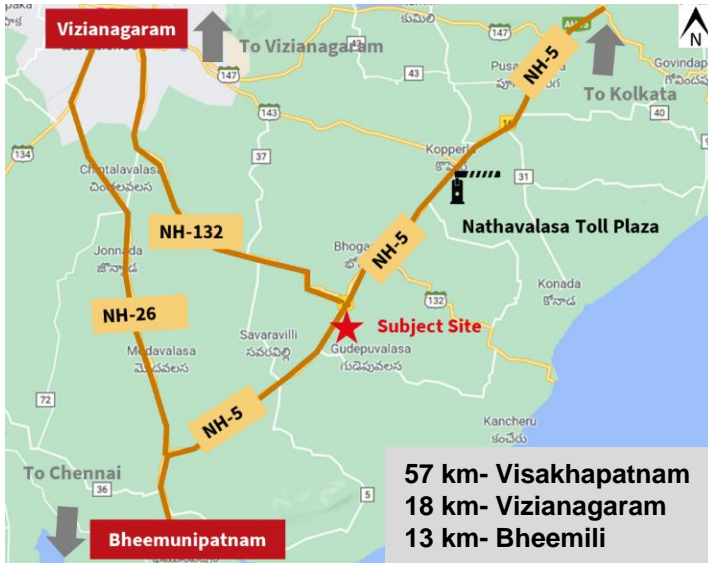


- Site Images



Site Code – Kolkata to Chennai/NH5/663+600/LHS/Visakhapatnam/Andhra Pradesh

• Site Location



Parameters	Details
NH Number	5
Geo Coordinates	18.0103, 83.4835
Chainage	663+600 (L.H.S)
Local Access	Directly from NH5
Land Area	0.58 Ha
Location of nearest Toll Plaza	Nathavalasa Toll Plaza (7 km)

• Site Attributes



Site images



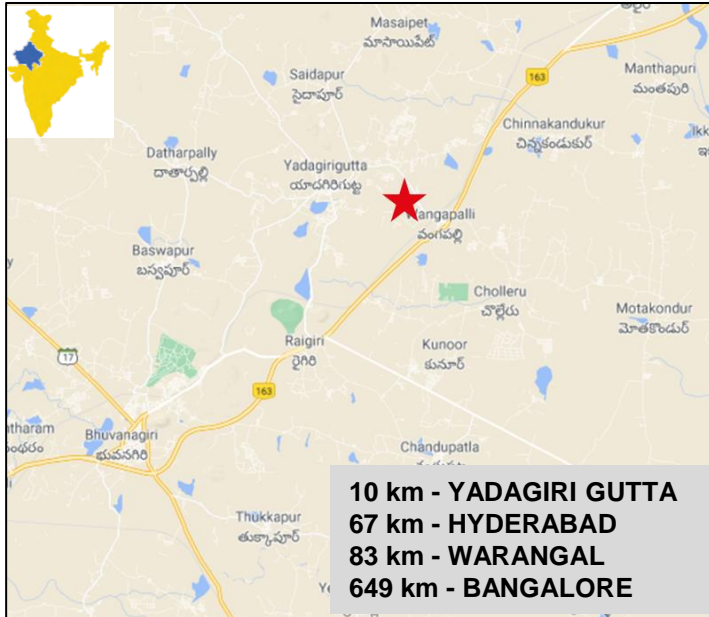
Site Frontage



Site from Highway

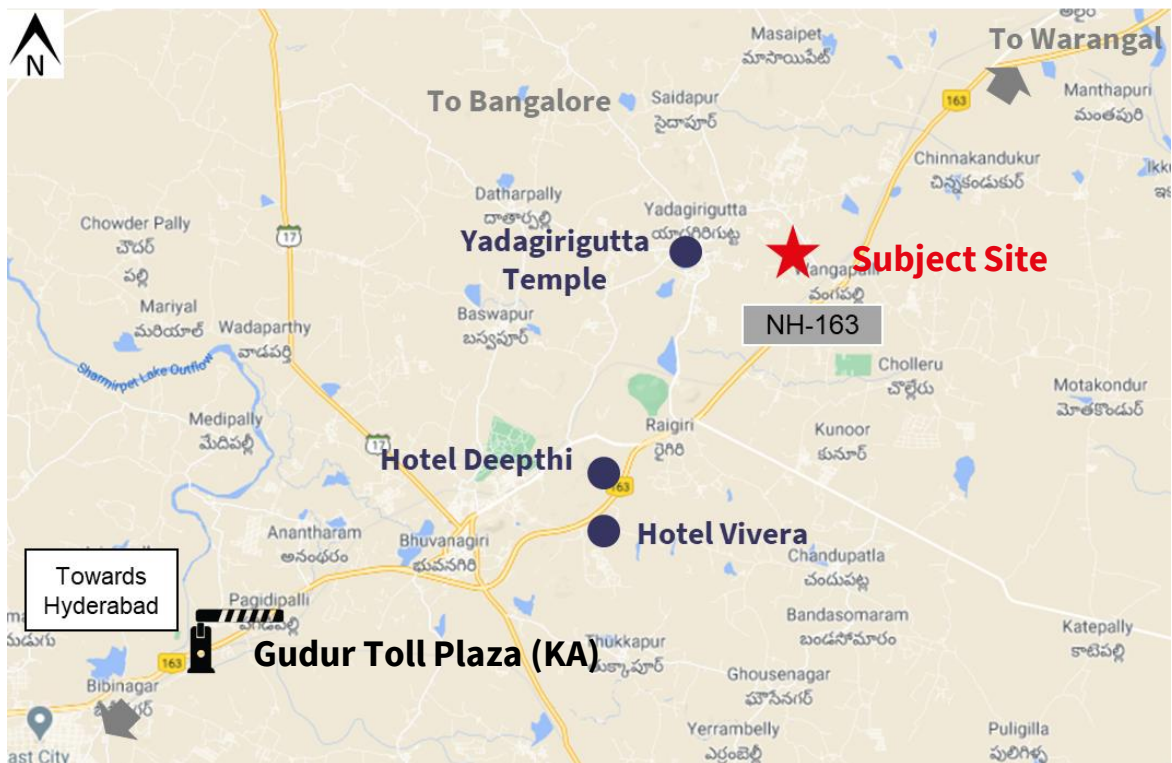
Site Code - Yadgiri to Warangal/NH163/65+725/LHS/Warangal/Telangana

- Site Location



Parameters	Details
NH Number	163
Geo Coordinates	17.623537, 79.016205
Chainage	65+725 (L.H.S)
Local Access	Directly from NH 163 via service road
Land Area	2.5 Ha
Location of nearest Toll Plaza	Gudur Toll Plaza (28 km)

- Site Macro Location Map

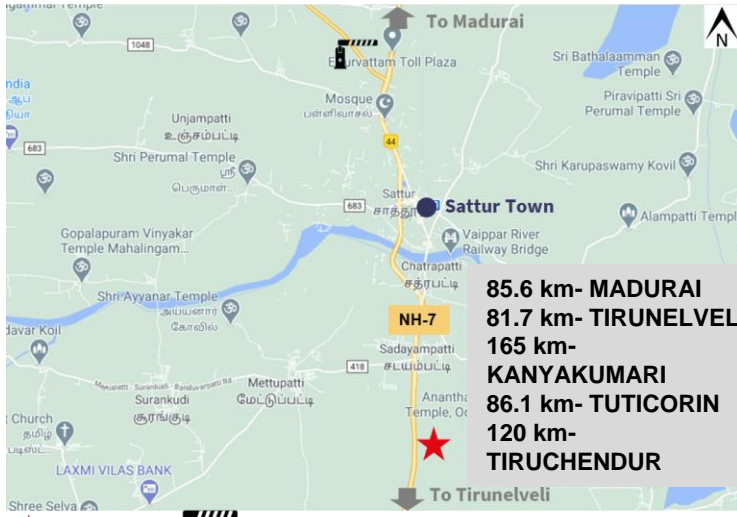


- Site Photographs



Site Code - Madurai to Madurai/NH7/84+00/LHS/Madurai/TamilNadu

• Site Location



Parameters	Details
NH Number	7
Geo Coordinates	9.314429, 77.918814
Chainage	84+ 000 (L.H.S)
Local Access	Directly from NH 7
Land Area	5.26 Ha
Location of nearest Toll Plaza	Etturvattam Toll Plaza (8.9 km)

★ Subject Site Etturvattam Toll Plaza

• Site Attributes

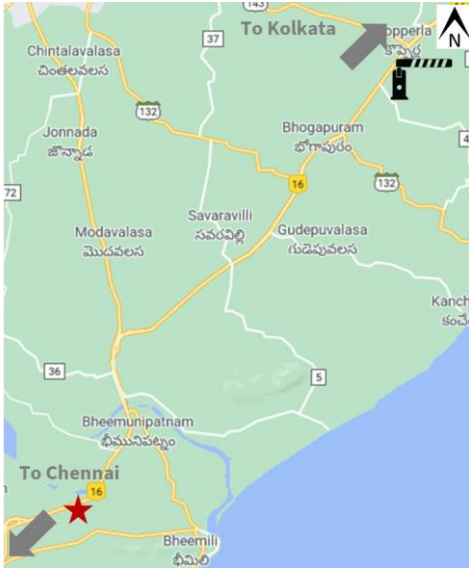


• Site Images



Site Code – Kolkata to Chennai/NH5/680+400/RHS/Visakhapatnam/Andhra Pradesh

• Site Location



Parameters	Details
NH Number	5
Geo Coordinates	17.9026,83.399
Chainage	680+400 (R.H.S)
Local Access	Directly from NH5
Land Area	0.63 Ha
Location of nearest Toll Plaza	Nathavalasa Toll Plaza (25 km)

• Site Attributes



Site images



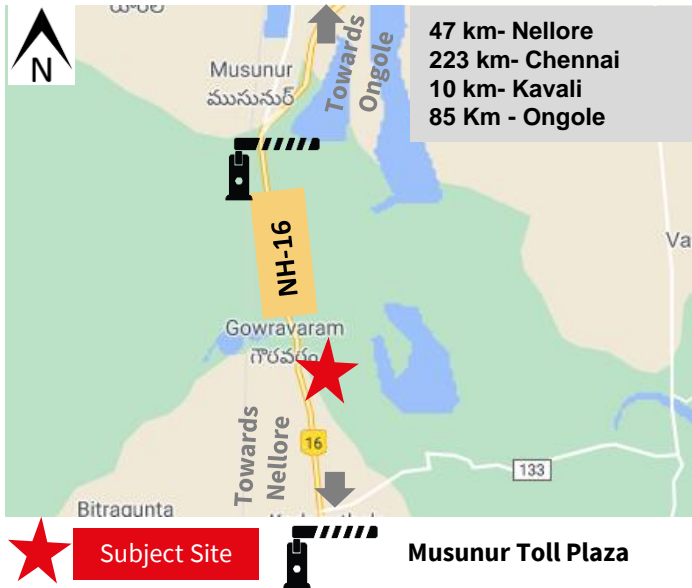
Site Frontage



Site from Highway

Site Code - NH16/1329+510/LHS/Nellore/Andhra Pradesh

- Site Location



Parameters	Details
NH Number	NH 16
Geo Coordinates	14.824039, 79.993919
Chainage	1329+ 510 (L.H.S)
Local Access	Directly from NH 16 & via service road
Land Area	5.87 Ha
Location of nearest Toll Plaza	Musunur Toll Plaza (3.0 km)

- Site Attributes

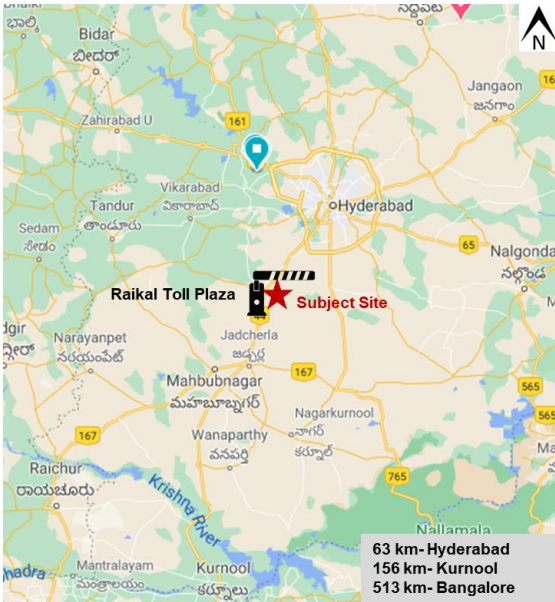


- Site Images



Site Code – Hyderabad to Bangalore/ NH44/54+55/LHS/Hyderabad/ Telangana

• Site Location



Parameters	Details
NH Number	44
Geo Coordinates	17.006,78.1953
Chainage	54+55 (L.H.S)
Local Access	Directly from NH44
Land Area	4.57 Ha
Location of nearest Toll Plaza	Raikal Toll Plaza (Adjacent)

• Site Attributes



Site images



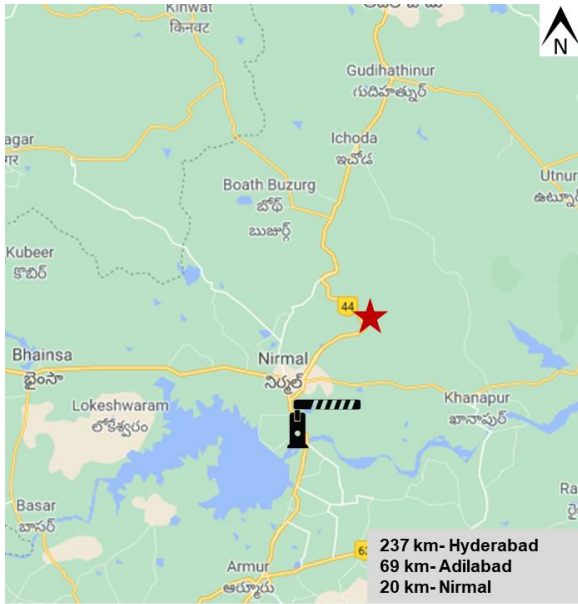
Site Frontage



Site from Highway

Site Code – Hyderabad to Nagpur/NH44/263+610/RHS/Nirmal/Telangana

- Site Location



Parameters	Details
NH Number	44
Geo Coordinates	19.164,78.4704
Chainage	263+610 (R.H.S)
Local Access	Directly from NH44 Service Road
Land Area	3.37 Ha
Location of nearest Toll Plaza	Gamjal Toll Plaza (23 Km)

- Site Attributes



Site images



Site Frontage



View of Highway

About NHAI

National Highways Authority of India (NHA) was set up by an act of the Parliament, NHA Act, 1988 "An Act to provide for the constitution of an Authority for the development, maintenance and management of national highways and for matter connected therewith or incidental thereto". It has been entrusted with National Highways Development Project, which along with other minor projects, has vested in it 50,329 kms of National Highways for development, maintenance and management. Our objective is to ensure that all contract awards and procurements conform to the best industry practices with regard to transparency of process, adoption of bid criteria to ensure healthy competition in award of contracts, implementation of projects conform to best quality requirements and the highway system is maintained to ensure best user comfort and convenience.

Get in touch

Shri A K Jain

General Manager (Technical)
NHA
e: akjain@nhai.org

Shri Gaurav Rohira

Deputy Manager (Technical)
NHA
e: gauravrohira@nhai.org

Address

National Highways Authority of India

G 5 & 6, Sector-10, Dwarka,
New Delhi 110 075
t: 91-011-25074100 & 25074200

International Consultants



सत्यमेव जयते

सड़क परिवहन और राजमार्ग मंत्रालय
MINISTRY OF ROAD TRANSPORT & HIGHWAYS
भारत सरकार Government of India



भारतीय राष्ट्रीय राजमार्ग प्राधिकरण
National Highways Authority of India